

# STATUS LAMPS

## Explosion-proof, Weatherproof SM87 SL & XB11 SL Range



**XB11 SL**  
close coupled for UL only

*Note: Units shown are for illustration only. Other variations are available.*

## Introduction

### SM87 SL

These ranges of versatile status lights have been designed to suit various offshore and onshore applications.

Available as LED, xenon, filament and fluorescent beacons.

The SM87 SL range is manufactured in marine grade alloy and the XB11 SL in corrosion-free GRP to provide a wide range of status lights to suit clients' requirements.

All units can be supplied as 1, 2, 3, 4 or 5 way.

- ★ Zone 1 and Zone 2 use.
- ★ EExd.
- ★ \*ATEX approved, Ex II 2GD.
- ★ \*BASEEFA certified.
- ★ \*UL listed for USA and Canada
  - Class I, Div. 1 & 2, Groups C & D.
  - Class I, Zone 1, AExd IIB T6.
- ★ \*CSA certified.
- ★ \*GOST 'R' & 'K' certified.
- ★ \*Chinese (CQST) certified.
- ★ Brazilian (Inmetro) certified.
- ★ IP66 & 67.
- ★ \*Certified temperature -55°C to +70°C.
- ★ \*LED, xenon, fluorescent, filament.
- ★ Marine grade alloy or GRP.
- ★ Close-coupled and pre-wired to customer's requirements.
- \*Model dependant.

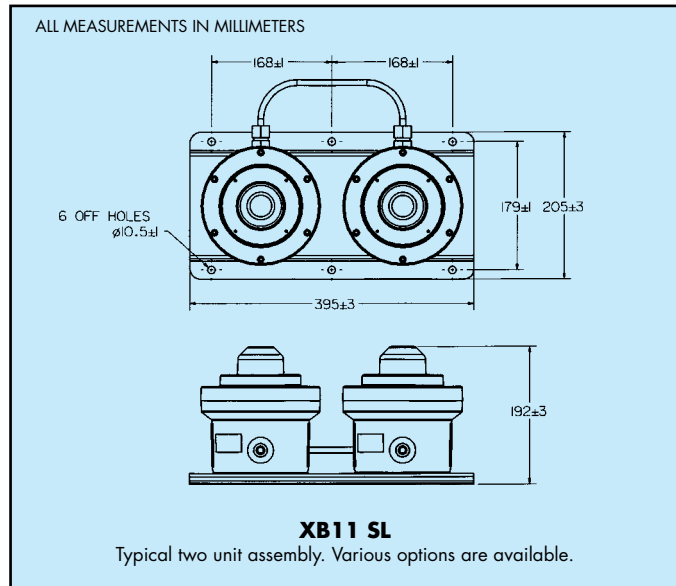
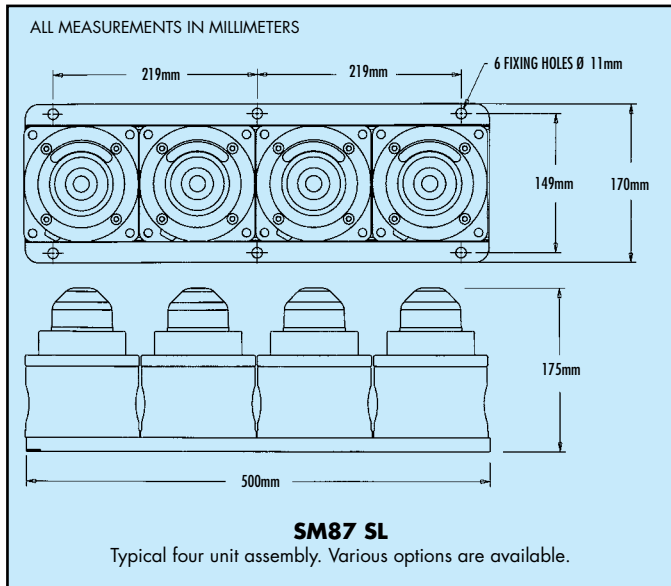
MEDC Ltd, Colliery Road,  
Pinxton, Nottingham NG16 6JF, UK.  
Tel: +44 (0)1773 864100  
Fax: +44 (0)1773 582800

MEDC International, 5829 West Sam Houston Parkway,  
North, Suite 1005, Houston, Texas 77041, USA.  
Tel: +1 (713) 937 9772  
Fax: +1 (713) 937 9773

MEDC Norway, Auglaendsmyråa 6,  
4016, Stavanger, Norge.  
Tel: +47 913 92 289  
Fax: +47 914 46 030

Sales Enq. Fax: +44 (0)1773 582830 Sales Orders Fax: +44 (0)1773 582832  
E-Mail: sales@medc.com Web: www.medc.com





## Specification

	<b>SM87 SL</b>	<b>XB11 SL</b>
Lamp Types	LED 192 Candela Xenon 6 joules maximum. Fluorescent 10W or 5W. Filament 40W maximum.	Xenon 5 joules. Fluorescent 10W or 5W. Filament 10W.
Voltage Frequency	50 Hz as standard. 60 Hz available if required.	
Xenon Voltages	24, 48V d.c. 110, 120, 240, 254V a.c. (see SM87 HXB data sheet for further information)	24V d.c., 110V, 240V a.c. (see XB11 data sheet for further details)
Filament Voltages	12, 24, 48V d.c., 110, 220, 240, 254V a.c. (see SM87 LU3 data sheet for further information)	24, 48V d.c., 110, 220, 240, 254V a.c. (see FL11* data sheet for further details)
Fluorescent Voltages	12, 24, 48V, 220, 240, 254V a.c. (see SM87 LU1 data sheet for further information)	24V d.c., 240V a.c. (see FL11* data sheet for further details)
Lamp Colours	Red, Amber, Yellow, Green, Blue or Clear.	
Certification	ATEX Approved: EExd IIC T4 (filament), EExd IIC T6 (Fluorescent & Xenon). Cert. No. Baseefa 03ATEX0222X CENELEC EN50014, EN50018 UL Listed for USA and Canada: Class I, Div 1, Groups C & D, Class I, Zone 1, AExd IIB T6, Listing No. E187894. CSA Certified: Class I, Div 1 & 2, Group D. Cert. No. 96406. GOST 'R' & 'K' Certified: 1Exd IIC T4. Chinese Certified: Exd IIC T4 (Filament), Exd IIC T6 (Fluorescent & Xenon) Brazilian (Inmetro) Certified: BR-Ex d IIC T3/T4/T5/T6	ATEX Approved: BASEEFA EExd IIB T5/T6. Cert. No. 99 ATEX 2195x CENELEC EN50014 and EN50018.  UL Listed for USA and Canada: Class I, Div 2, Groups C & D, Class I, Zones 1 & 2, AExd IIB T5/T6. Listing No. E187894 (XB11 only). Chinese Certified: Exd IIB T5/T6. Brazilian (Inmetro) Certified: BR-Ex d IIB T4/T5/T6
Terminals	2.5mm <sup>2</sup> max.	2.5mm <sup>2</sup> max.
Wiring	Standard configuration of internal wiring is to common the negative/neutral connections. If individually wired lamps are required, please state requirements.	
Entries	Up to 3 x 20mm or 25mm ISO.	1 x 20mm.
Enclosure	LM 25TF Marine Grade Alloy.	GRP.
Lens	Glass	
Finish	Epoxy paint as standard or to customer's specification.	Natural Black or Epoxy paint to customer's specification.
Ingress Protection	IP66 & 67.	
Ambient Temp.	-25°C to +55°C (LED & Fluorescent). -55°C to +70°C (Xenon) -55°C to +55°C (Filament).	-55°C to +70°C.
Gland Type	Exd	Exd

\*NOTE: FL11 currently not available UL listed.

## Ordering Requirements

Please contact MEDC to discuss your requirements.



All the above specifications, dimensions, weights and tolerances are nominal (typical) and MEDC reserve the right to vary all data without prior notice. No liability is accepted for any consequence of use.

# STATUS LAMP EExe(m), Weatherproof SL5 Range



*Now also with Blue and Clear LEDs*



## Introduction

Manufactured in GRP, with a high ingress protection and high light output, these status lamps have been designed for use in potentially explosive atmospheres and harsh environmental conditions such as those found offshore and onshore in the petrochemical industries.

A long life, high intensity, LED version is now available.

- ★ Zone 1 and Zone 2 use.
- ★ EExe(m) II T3/T4.
- ★ ATEX approved, Ex II 2G.
- ★ BASEEFA certified.
- ★ Chinese (CQST) certified.
- ★ IP66 and IP67.
- ★ Certified temperature  $-40^{\circ}\text{C}$  to  $+55^{\circ}\text{C}^*$ .
- ★ Corrosion resistant GRP.
- ★ Filament lamps (up to 5 pairs).
- ★ Xenon & LED versions available.
- ★ Various lamp colours.
- ★ Lightweight.
- ★ Retained stainless steel cover screws.

\*Depending on version.

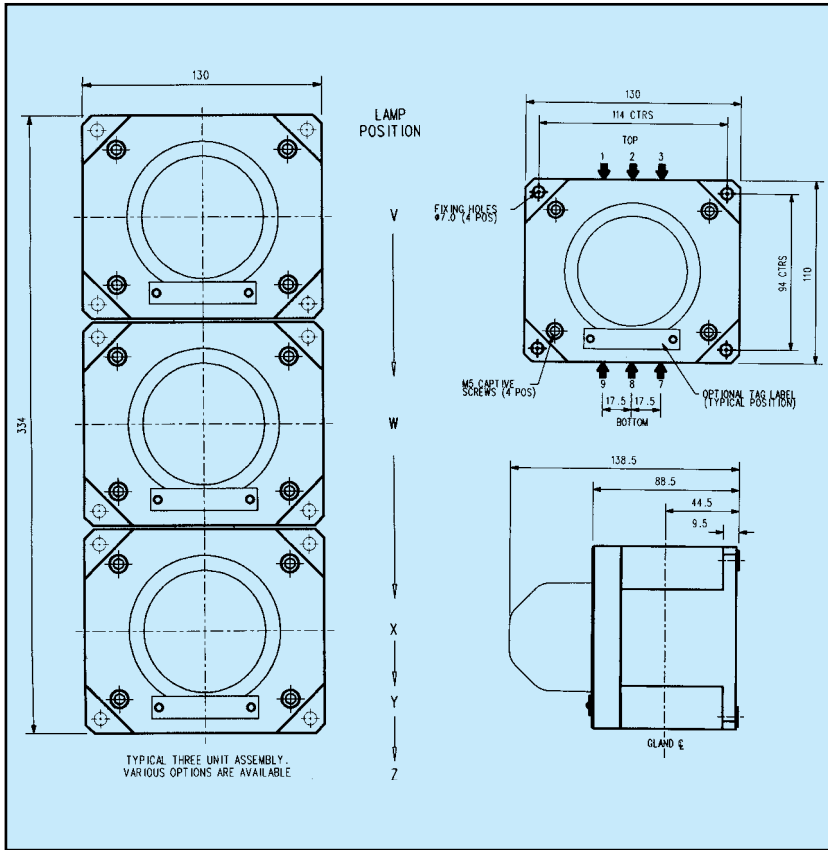
MEDC Ltd, Colliery Road,  
Pinxton, Nottingham NG16 6JF, UK.  
Tel: +44 (0)1773 864100  
Fax: +44 (0)1773 582800

MEDC International, 5829 West Sam Houston Parkway,  
North, Suite 1005, Houston, Texas 77041, USA.  
Tel: +1 (713) 937 9772  
Fax: +1 (713) 937 9773

MEDC Norway, Auglaendemyraa 6,  
4016, Stavanger, Norge.  
Tel: +47 913 92 289  
Fax: +47 914 46 030

Sales Enq. Fax: +44 (0)1773 582830 Sales Orders Fax: +44 (0)1773 582832  
E-Mail: sales@medc.com Web: www.medc.com





## Specification

Certification: CENELEC EN50014, 19 & 28.

Cert. No. BAS02ATEX2108X.

EExem II T3/T4. Zones 1 & 2.

Chinese (CQST) – Exem II T4, LED

– Exe II T3, Filament

– Exem II T4, Xenon

Material: UV stable, glass reinforced polyester with polycarbonate wellglass. Captive stainless steel cover screws.

Finish: Body natural black or painted to client specifications.

Weight: 1.2kg 1 way.

Certified –40°C to +55°C (Filament & Xenon).

Temperature: –40°C to +45°C (LED).

Ingress

Protection: IP66 and IP67.

Voltages: d.c. – 12V, 24V, 48V.

a.c. – 110V, 220V, 240V, 254V, 260V.

Note: Xenon & LED versions only available in 24V and 48V.

Current Consumption:

	Voltage:	24V	48V
Xenon	Current:	120mA	95mA
LED	Current:	130-180mA	70-90mA

Light Module: Up to 5 ways – Filament: 2 x 5W.

Xenon: 1J (nominal).

LED: Up to 400Cd.

Light Module Colours: Red, Amber, Yellow, Green, Blue or Clear.

Terminals: Filament: Max 12 x 4mm<sup>2</sup>.

Xenon: Max 16 x 2.5mm<sup>2</sup>.

LED: Max 16 x 2.5mm<sup>2</sup> or 4mm<sup>2</sup>.

Wiring: Standard configuration of internal wiring is to common the negative/neutral connections. If individually wired lamps are required, please state.

Labels: Optional stainless steel tag/duty label.

Entries:

Size	Maximum Number	Entry Positions	
		Top	Bottom
M16	2	Any	Any
M20	2	Any	Any
M25/M32	1	2	8

## Ordering Requirements

The following code is designed to help in the selection of the correct unit. Build up the reference number by inserting the code for each component into the appropriate box.

Unit	Type	Lamp Type Positions					Voltage	Cable Entries	Duty/Tag Label	Finish		
SL5		V	W	X	Y	Z						
Type	Code	Indicate light module type					*Voltage	Code	Entries	Code	Label	Code
Uncertified	W	Filament 1	LED Steady 3			12V d.c.	012	M16	*A	Duty Label	D*	
EExe(m)	E	Xenon 2	LED Flashing 4			24V d.c.	024	M20	*B	Tag	T*	
Chinese (CQST)	Q	Suffixed by colour required:					48V d.c.	048	M25	*C	None	N
		Lamp Colours	Code			110V a.c.	110	M32	*D	*Specify wording.		
		Red	R			220V a.c.	220	*Prefix with cable entry position. (See diagram above) E.g. 7A, 9A.				
		Amber	A			240V a.c.	240			Finish	Code	
		Yellow*	Y			254V a.c.	254			Natural Black	N	
		Green	G			260V a.c.	260			Red	R	
		Blue	B							Special	S*	
		Clear	C							*Please specify		

\*LED not available

\*Note: Xenon and LED versions are only available in 24V and 48V d.c.

EXAMPLE: A two way EExe certified unit, with filament lamps coloured red top, blue bottom, rated 240V, with 2 x M20 bottom entries, finished in red would be our ref: SL5EV1RW1B2407B9BNR.



All the above specifications, dimensions, weights and tolerances are nominal (typical) and MEDC reserve the right to vary all data without prior notice. No liability is accepted for any consequence of use.



## SL15 Range | Status Lights

Exd, Weatherproof

These Status Lights have been designed for use in potentially explosive atmospheres and harsh environmental conditions. The indicators are suitable for use offshore or onshore, where a high degree of corrosion resistance is required.

Certification Standards



**IECEX**

### ATEX Approved

II 2GD

### IEC Ex Approved

UL Listed (see US data sheet)

IP66 and 67, NEMA 4X & 6

### Certified temperature

-55° C to +70° C \*

-67° F to +158° F

### Corrosion free GRP

Filament 60W or 100W\*

Various flash rates available for xenon units. Various lens colours.  
Optional cast or wire lens guard

\*Model dependent

The housings are manufactured from a U.V. stable, glass reinforced polyester (GRP) fitted to a stainless steel mounting plate for ease of installation. Stainless steel fixings are also used, ensuring a corrosion free product.

Units can be painted to customer specification and supplied with identification labels.

Units can be supplied as 2, 3 or 4 way in any combination of xenon beacon or filament lamp.



3-way Status Light  
(shown without optional guards)

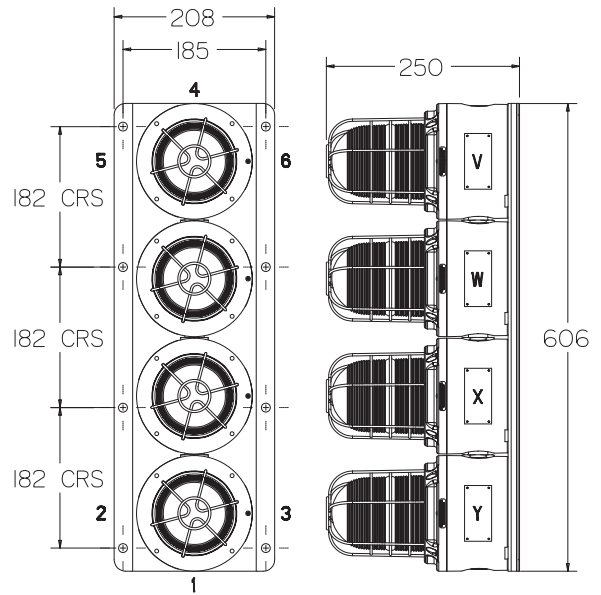
# Specification

Models:	SL15 Status Lights
Certification:	CENELEC EN50014 & EN50018
	ATEX cert. no. Baseefa 04ATE0009X
	Ⓜ II 2 GD EEx d IIC T3 / T4 / T5 / T6*
	IEC Ex Approved
	Ex d IIC T200°, T135°C, T100°, T85°C* DIP A21 IP6X
	UL listed versions, see separate data sheet
	*Model dependent
Material:	Body: Glass reinforced polyester Lens: Glass Back plate & fixings: stainless steel 316 Wire Guard (optional): stainless steel wire Cast Guard (optional): aluminum LM25M
Finish:	Natural black or painted to customer choice
Voltage:	24, 48 V d.c. 110, 120, 230, 240, 254 V a.c.

<b>Xenon</b>	Tube energy: 15 Joules Tube life: >1x10 <sup>6</sup> flashes Flash rate: 60, 80 or 120 fpm Certified: -55°C to +40°C (T6) Temperature: -55°C to +55°C (T5) -55°C to +70°C (T4)	<b>Filament</b>	Lamp Type: 60W or 100W GLS filament Lamp Holder: E27 as standard Certified: 60W -55°C to +55°C (T4) Temperature: -55°C to +70°C (T3) 100W -55°C to +40°C (T3)
Ingress	IP66 & 67	Protection:	NEMA 4X & 6
Weight:	2-Way: 6.5Kg, 3-Way: 9.8Kg, 4-Way: 13.1Kg		
Entries:	Available with up to 2 x M20 or 2 x M25 entries in either bottom or top of unit. Entries in both bottom and top of unit by special order only.		
Terminals:	Suitable for up to 2.5mm <sup>2</sup> cable max.		
Labels:	Tag/Duty label option		

Entry positions 1 to 6

Lamp positions V to Y



Xenon electrical ratings (per way)

Voltage	dc		ac				
	24	48	110	120	230	240	254
Current (A)	0.78	0.67	0.40	0.40	0.20	0.20	0.17

Effective Candlepower (Cd) - 330 at 60 fpm

Filament electrical ratings (per way)

Voltage	dc		ac				
	24	48	110	120	230	240	254
Current (A) 60W	2.5	1.25	0.55	0.50	0.26	0.25	0.24
Current (A) 100W	4.2	2.10	0.91	0.83	0.43	0.42	0.39

Multiplying factor for coloured lenses

Red	Blue	Amber	Green	Yellow
0.15	0.12	0.51	0.49	0.86

eg. an amber lens gives 0.51 (approx half) of the intensity from a clear lens

## Ordering Requirements

Lamp Type / Positions (see diagram)

Model  Certification  V  W  X  Y  Voltage  Cable Entries  Lens Guard  Duty/Tag label  Finish

Certification	Code	Indicate light module type		Voltage	Code	Entry size	Code	Guard	Code	Label	Code	Finish	Code
ATEX	B	Filament	Xenon	24V d.c.	024	M20	*C	None	N	Duty label	D*	Natural Black	N
IEC Ex	J	60W - 1	60fpm - 3	48V d.c.	048	M25	*D	Cast	C	Tag label	T*	Red	R
		100W - 2	80fpm - 4	110V a.c.	110	* Prefix with cable entry position (see diagram) Note: maximum 2 entries bottom OR top. Bottom AND top entry(s) by special order only.		Wire	W	None	N	Blue	B
		Suffixed by colour required		120V a.c.	120					*specify wording		Yellow	Y
		Lens colour	Code	230V a.c.	230							Green	G
		Red	R	240V a.c.	240							White	W
		Blue	B	254V a.c.	254							Special finish	S*
		Green	G									*please specify	
		Amber	A										
		Yellow	Y										
		Clear	C										

Example: A two way ATEX approved unit with one 100W filament lamp with green lens for the top unit and one 60fpm xenon lamp with red lens for the bottom unit, rated 24V with 2 x M20 bottom entries, no guard, no labels, finished in red would be: SL15BV2GW3R0242C3CNNR

To order UL listed versions, see separate US datasheet

# STATUS LAMPS

## Explosion-proof, Weatherproof SM87 SL & XB11 SL Range



**XB11 SL**  
close coupled for UL only

*Note: Units shown are for illustration only. Other variations are available.*

## Introduction

### SM87 SL

These ranges of versatile status lights have been designed to suit various offshore and onshore applications.

Available as LED, xenon, filament and fluorescent beacons.

The SM87 SL range is manufactured in marine grade alloy and the XB11 SL in corrosion-free GRP to provide a wide range of status lights to suit clients' requirements.

All units can be supplied as 1, 2, 3, 4 or 5 way.

- ★ Zone 1 and Zone 2 use.
- ★ EExd.
- ★ \*ATEX approved, Ex II 2GD.
- ★ \*BASEEFA certified.
- ★ \*UL listed for USA and Canada
  - Class I, Div. 1 & 2, Groups C & D.
  - Class I, Zone 1, AExd IIB T6.
- ★ \*CSA certified.
- ★ \*GOST 'R' & 'K' certified.
- ★ \*Chinese (CQST) certified.
- ★ Brazilian (Inmetro) certified.
- ★ IP66 & 67.
- ★ \*Certified temperature -55°C to +70°C.
- ★ \*LED, xenon, fluorescent, filament.
- ★ Marine grade alloy or GRP.
- ★ Close-coupled and pre-wired to customer's requirements.
- ★ \*Model dependant.

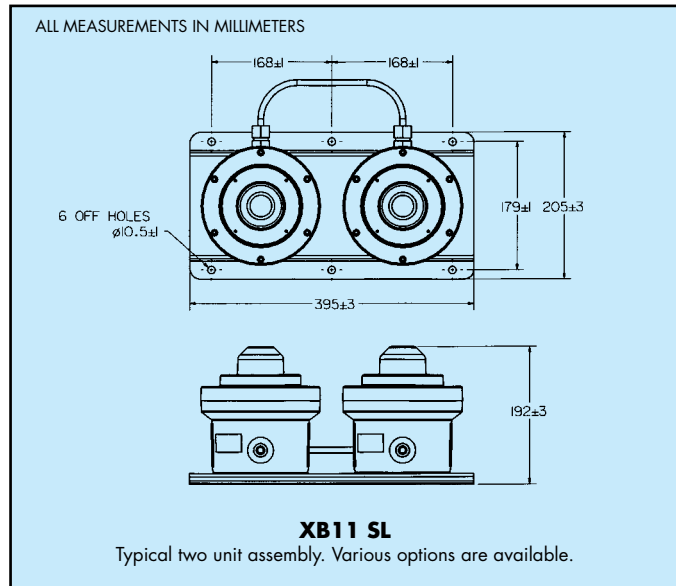
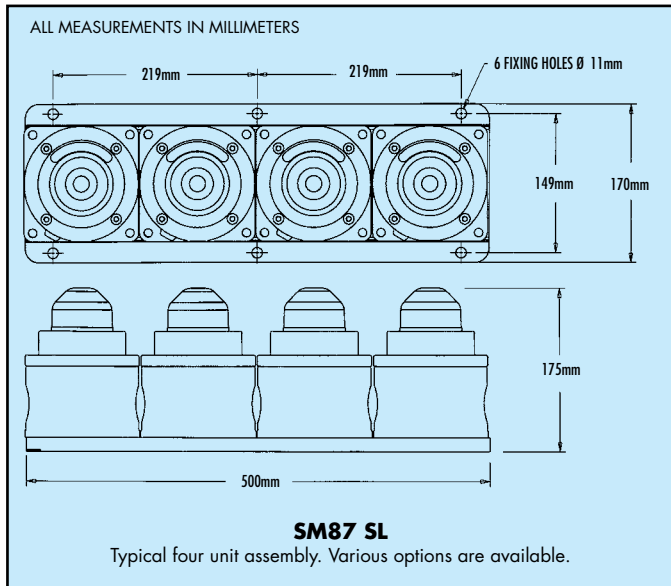
MEDC Ltd, Colliery Road,  
Pinxton, Nottingham NG16 6JF, UK.  
Tel: +44 (0)1773 864100  
Fax: +44 (0)1773 582800

MEDC International, 5829 West Sam Houston Parkway,  
North, Suite 1005, Houston, Texas 77041, USA.  
Tel: +1 (713) 937 9772  
Fax: +1 (713) 937 9773

MEDC Norway, Auglaendsmyraa 6,  
4016, Stavanger, Norge.  
Tel: +47 913 92 289  
Fax: +47 914 46 030

Sales Enq. Fax: +44 (0)1773 582830 Sales Orders Fax: +44 (0)1773 582832  
E-Mail: sales@medc.com Web: www.medc.com





## Specification

Lamp Types	<b>SM87 SL</b>	<b>XB11 SL</b>
		LED 192 Candela Xenon 6 joules maximum. Fluorescent 10W or 5W. Filament 40W maximum.
Voltage Frequency	50 Hz as standard. 60 Hz available if required.	
Xenon Voltages	24, 48V d.c. 110, 120, 240, 254V a.c. (see SM87 HXB data sheet for further information)	24V d.c., 110V, 240V a.c. (see XB11 data sheet for further details)
Filament Voltages	12, 24, 48V d.c., 110, 220, 240, 254V a.c. (see SM87 LU3 data sheet for further information)	24, 48V d.c., 110, 220, 240, 254V a.c. (see FL11* data sheet for further details)
Fluorescent Voltages	12, 24, 48V, 220, 240, 254V a.c. (see SM87 LU1 data sheet for further information)	24V d.c., 240V a.c. (see FL11* data sheet for further details)
Lamp Colours	Red, Amber, Yellow, Green, Blue or Clear.	
Certification	ATEX Approved: EExd IIC T4 (filament), EExd IIC T6 (Fluorescent & Xenon). Cert. No. Baseefa 03ATEX0222X CENELEC EN50014, EN50018 UL Listed for USA and Canada: Class I, Div 1, Groups C & D, Class I, Zone 1, AExd IIB T6, Listing No. E187894. CSA Certified: Class I, Div 1 & 2, Group D. Cert. No. 96406. GOST 'R' & 'K' Certified: 1Exd IIC T4. Chinese Certified: Exd IIC T4 (Filament), Exd IIC T6 (Fluorescent & Xenon) Brazilian (Inmetro) Certified: BR-Ex d IIC T3/T4/T5/T6	ATEX Approved: BASEEFA EExd IIB T5/T6. Cert. No. 99 ATEX 2195x CENELEC EN50014 and EN50018.  UL Listed for USA and Canada: Class I, Div 2, Groups C & D, Class I, Zones 1 & 2, AExd IIB T5/T6. Listing No. E187894 (XB11 only). Chinese Certified: Exd IIB T5/T6. Brazilian (Inmetro) Certified: BR-Ex d IIB T4/T5/T6
Terminals	2.5mm <sup>2</sup> max.	2.5mm <sup>2</sup> max.
Wiring	Standard configuration of internal wiring is to common the negative/neutral connections. If individually wired lamps are required, please state requirements.	
Entries	Up to 3 x 20mm or 25mm ISO.	1 x 20mm.
Enclosure	LM 25TF Marine Grade Alloy.	GRP.
Lens	Glass	
Finish	Epoxy paint as standard or to customer's specification.	Natural Black or Epoxy paint to customer's specification.
Ingress Protection	IP66 & 67.	
Ambient Temp.	-25°C to +55°C (LED & Fluorescent). -55°C to +70°C (Xenon) -55°C to +55°C (Filament).	-55°C to +70°C.
Gland Type	Exd	Exd

\*NOTE: FL11 currently not available UL listed.

## Ordering Requirements

Please contact MEDC to discuss your requirements.



All the above specifications, dimensions, weights and tolerances are nominal (typical) and MEDC reserve the right to vary all data without prior notice. No liability is accepted for any consequence of use.



# STATUS LIGHTS

## Explosion-proof, Weatherproof SM87 SL & XB12 SL Range



**SM87 SL**



**XB12 SL**

*Note: Units shown are for illustration only. Other variations are available.*

## Introduction

These ranges of versatile status lights have been designed to suit various offshore and onshore applications.

Available as Xenon, filament and fluorescent beacons/strobes.

The SM87 SL range is manufactured in marine grade alloy and the XB12 SL in corrosion-free GRP to provide a wide range of status lights to suit clients' requirements.

All units can be supplied as 1, 2, 3, 4 or 5 way.

**European, Russian and other worldwide approvals are available, refer to main section of catalog.**

- ★ \*UL listed for USA and Canada
    - Class I, Div. 1 & 2, Groups C & D.
    - Class I, Zone 1, AExd IIB T6.
  - ★ \*CSA certified.
  - ★ ATEX approved.
  - ★ \*Xenon, fluorescent, filament.
  - ★ NEMA 4x & 6, IP66 & 67.
  - ★ Certified temperature -67°F to +131°F.  
-55°C to +55°C.
  - ★ \*4 wire monitored connexion.
  - ★ Marine grade alloy or GRP.
  - ★ Close-coupled and pre-wired to customer's requirements.
- \*Model dependant.

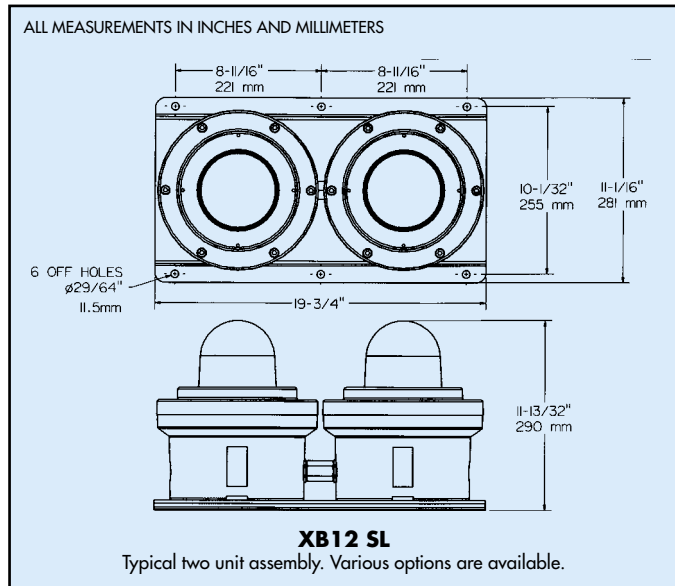
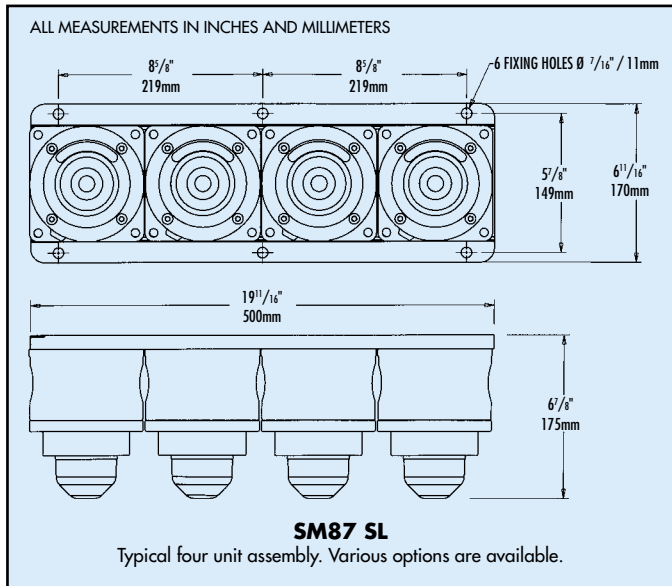
MEDC Ltd, Colliery Road,  
Pinxton, Nottingham NG16 6JF, UK.  
Tel: +44 (0)1773 864100  
Fax: +44 (0)1773 582800

MEDC International, 5829 West Sam Houston Parkway,  
North, Suite 1005, Houston, Texas 77041, USA.  
Tel: +1 (713) 937 9772  
Fax: +1 (713) 937 9773

MEDC Norway, Auglaendsmyraa 6,  
4016, Stavanger, Norge.  
Tel: +47 913 92 289  
Fax: +47 914 46 030

Sales Enq. Fax: +44 (0)1773 582830 Sales Orders Fax: +44 (0)1773 582832  
E-Mail: sales@medc.com Web: www.medc.com





## Specification

	<b>SM87 SL</b>	<b>XB12 SL</b>
Lamp Types	Xenon 6 joules maximum. Fluorescent 10W or 5W. Filament 40W maximum.	Xenon 21 joules.  Filament 60W.
Voltage Frequency	50 Hz as standard. 60 Hz available if required.	
Xenon Voltages	24, 48V d.c. 110, 120, 240, 254V a.c. (see SM87 HXB data sheet for further information)	24V d.c., 110V, 240V a.c. (see XB12 data sheet for further information)
Filament Voltages	12, 24, 48V d.c., 110, 220, 240, 254V a.c. (see SM87 LU3 data sheet for further information)	120V a.c. (see FB12 data sheet for further information)
Fluorescent Voltages	12, 24, 48V, 220, 240, 254V a.c. (see SM87 LU1 data sheet for further information)	-
Lamp Colours	Red, Amber, Yellow, Green, Blue or Clear.	
Certification	UL Listed for USA and Canada Class I, Div 1, Groups C & D, Class I, Zone 1, AExd IIB T6. Listing No. E187894. CSA Certified: Class 1, Div 1 & 2, Group D. Cert. No. 96406. ATEX Approved: EExd IIC T4 (filament), EExd IIC T6 (Fluorescent & Xenon). Cert. No. Baseefa 03ATEX0222X, CENELEC EN50014, EN50018.	UL Listed for USA and Canada Class I, Div 2, Groups C & D, Class I, Zones 1 & 2, AExd IIB T4/T5. Listing No. E187894. ATEX Approved: EExd IIB T4/T5. Cert. No. 99 ATEX 2196 CENELEC EN50014 and EN50018.
Terminals	Will accept up to 14AWG cable.	Will accept up to 6 off 10AWG cable.
Wiring	Standard configuration of internal wiring is to common the negative/neutral connexions. If individually wired lamps are required, please state requirements.	
Entries	Up to 3 x 1/2" or 3/4" NPT.	1 x 1/2" NPT.
Enclosure	LM 25TF Marine Grade Alloy.	GRP.
Lens	Glass	
Finish	Epoxy paint as standard or to customer's specification.	Natural Black or Epoxy paint to customer's specification.
Ingress Protection	NEMA 4x and 6, IP66 & 67.	
Ambient Temp.	-13°F to 131°F (-25°C to +55°C) – Class I, Div 1. -67°F to +131°F (-55°C to +55°C) – Class I, Zone 1.	-67°F to +158°F (-55°C to +70°C).

Note: XB11 SLUL also available.

## Ordering Requirements

Please contact MEDC to discuss your requirements.



All the above specifications, dimensions, weights and tolerances are nominal (typical) and MEDC reserve the right to vary all data without prior notice. No liability is accepted for any consequence of use.

# 5 JOULE XENON & HIGH INTENSITY LED BEACONS EExd, Weatherproof SM87 & LED Ranges



**Now VNIPO  
Approved**

## Introduction

These certified beacons have been designed for use in harsh environmental conditions. The stainless steel or marine grade alloy enclosures are suitable for use offshore or onshore, where light weight combined with corrosion resistance and strength is required. Units can be painted to customer specification and fitted with identification labels.

LED version available, offering extended lifetimes.

A high temperature version is available – contact MEDC for details.

- ★ Zone 1 and Zone 2 use.
  - ★ EExd IICT4/T6.
  - ★ ATEX approved Ex II 2GD.
  - ★ BASEEFA Certified.
  - ★ UL Listed for USA and Canada:
    - Class I, Div. 1, Groups C & D.
    - Class I, Zone 1 AExd IIB.
  - ★ CSA Certified.
  - ★ GOST 'R' & 'K' Certified\*.
  - ★ Chinese (CQST) Certified.
  - ★ Brazilian (Inmetro) Certified.
  - ★ IP66 and IP67.
  - ★ Certified temperature\* –55°C to +70°C.
  - ★ High temperature version (up to 85°C) available.
  - ★ Stainless steel or marine grade alloy.
  - ★ Xenon or LED versions.
  - ★ Various lens colours.
  - ★ Optional lens guard.
  - ★ Telephone or relay initiated.
- \*Depending on version.

MEDC Ltd, Colliery Road,  
Pinxton, Nottingham NG16 6JF, UK.  
Tel: +44 (0)1773 864100  
Fax: +44 (0)1773 582800

MEDC International, 5829 West Sam Houston Parkway,  
North, Suite 1005, Houston, Texas 77041, USA.  
Tel: +1 (713) 937 9772  
Fax: +1 (713) 937 9773

MEDC Norway, Auglaendsmyråa 6,  
4016, Stavanger, Norge.  
Tel: +47 913 92 289  
Fax: +47 914 46 030

Sales Enq. Fax: +44 (0)1773 582830 Sales Orders Fax: +44 (0)1773 582832  
E-Mail: sales@medc.com Web: www.medc.com



# Specification

Certification: ATEX EExdIIC T6.

Cert. No. Baseefa 03ATEX0222.

CENELEC EN50014 and EN50018 and EN50019.

CSA Certification to C22.2 Nos. 0, 0.4, 0.5, 9, 30-M1986, 94-M91, 137-M1981. Class I. Div 1. Group D. Enclosure 3/4. Cert. No. 96406. (HXB only).

UL Listed for USA & Canada: Class I, Div 1, Groups C & D and Class 1, Zone 1. (HXB & XBT only). Listing No. E187894.

Refer to UL data sheet, at rear of catalogue, for complete information.

GOST 'R' Certification: 1Exd IIC T4, (HXB only) Russian Fire Approved (VNIPO).

GOST 'K' Certification: Exd IIC T4.

Chinese (CQST) Certification: Exd IIC T4/T6, (HXB only).

Brazilian (Inmetro) Certification: BR-Ex d IIC T3/T4/T5/T6

Material: HXBS, XBTS and LEDS – Grade 316 ANC4B Stainless Steel.

HXBA, XBTA & LEDA – LM25 TF Marine Grade Alloy.

Lens – Glass.

Note: Terminal Chamber available only in Stainless Steel.

UL version available only in marine grade alloy.

CSA version available only in stainless steel.

Finish: Epoxy paint finish as standard or to customer's specification.

Voltage	DC		AC 50/60 Hz				
	24	48	110	120	220	240	254
<b>SM87 HXB XBT</b>							
Tube Energy (Joules)	5	5	6	7	6	7	8
Peak Current							
Consumption (mA)	320	170	250	275	120	135	150
Effective Intensity (Cd)	29	29	32	39	32	39	44
Peak Intensity	22213	22213	25061	30187	25061	30187	34174
Power Consumption (Watts)	7.2	7.6	25	27	25	27	35
<b>SM87 LED</b>							
Current Consumption	165mA	85mA	N/A	N/A	N/A	N/A	N/A

FOR COLOURED LENSES

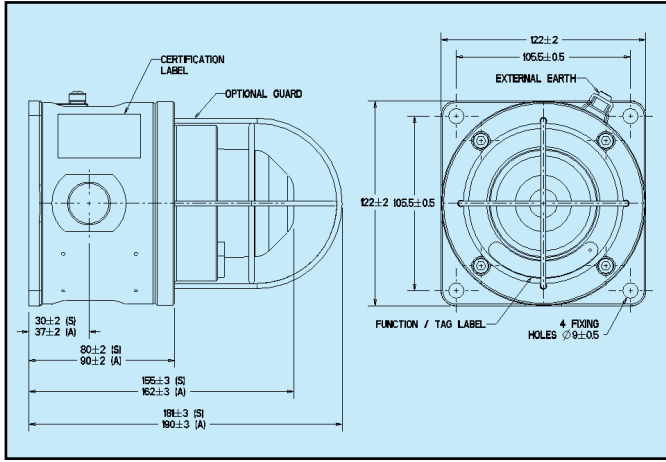
Colour	Red	Blue	Amber	Green	Yellow
Multiplying Factor	0.15	0.12	0.51	0.49	0.86

The photometric data has been verified by BSI. A report is available if required.

LED Light Output	Colour	Total LED Output (Candela)
Steady or Flashing (customer selectable)	Red	192
	Amber	64
	Green	17
	Blue	64

LED/Lens Colour: Red, Blue, Green, Amber, Yellow (not LED) or Clear (not LED).

Flash Rate: 60fpm as standard, other flash rates available on request.



Weight: HXBS & LEDS – 3.8kg each (approx).  
HXBA & LEDA – 2kg. each (approx.).

BASEEFA HXB = -55°C to +70°C.

Certified LED = -20°C to +40°C.

Temperature: Versions are available certified up to +55°C maximum with a T4 rating.  
XBT (High temp) = -40°C to +85°C.

CSA Certified

Temperature: -50°C to +40°C.

UL Certified

Temperature: HXB = -55°C to +70°C. XBT (High Temp.) = -40°C to +85°C.

GOST 'R' Certified

Temperature: HXB = -55°C to +55°C.

Ingress

Protection: IP66 & IP67.

Terminals: HXB & XBT – 6 off suitable for up to 2.5mm<sup>2</sup> cable.

LED – 6 off suitable for up to 2.5mm<sup>2</sup> cable.

Telephone initiation or relay interface:

Initiation by telephone ringing tone or low voltage control signals.

Labels: Duty & Tag Labels optional.

Entries: Up to 4 x 20mm/25mm ISO or 1/2"/3/4" NPT.

## Ordering Requirements

The following code is designed to help in the selection of the correct unit. Build up the reference number by inserting the code for each component into the appropriate box. **For standard products, available ex-stock, contact sales office for details.**

Model	Certification	Voltage	Lens/LEDcolour	Lens Guard	Entries	Tag/Duty Label	Initiate Option	Finish
<input type="text"/>	<input type="text"/>	<input type="text"/>	<input type="text"/>	<input type="text"/>	<input type="text"/>	<input type="text"/>	<input type="text"/>	<input type="text"/>
<b>Type</b>	<b>Code</b>	<b>Certification Code</b>	<b>Colour Code</b>	<b>Voltage Code</b>	<b>Entries Code</b>	<b>Initiate Option Code</b>	<b>Finish Code</b>	
Xenon (stainless steel)	SM87HXBS	ATEX B UL UL	Red R Blue B Green G Amber A Yellow Y (not LED) Clear C (not LED)	24V d.c. 024 48V d.c. not XBT 048 110V a.c. not LED, XBT110 120V a.c. 120 220V a.c. 220 240V a.c. 240 254V a.c. 254	20mm 1 25mm 2 1/2" NPT 3 3/4" NPT 4 Top *T Bottom *B RHS *R LHS *L	Telephone *T Relay *R EOL Resistor *E None N *Not available on UL versions.	Red R Blue B Yellow Y Yellow/Black Stripe X Grey G White W Special Finish S	
Xenon (alloy)	SM87HXBA	CSA C						
Xenon High Temp. (alloy)	SM87XBTA*	GOST 'R' G GOST 'K' K Chinese (CQST) Q						
Xenon High Temp. (stainless steel)	SM87XBTS*	Inmetro DM						
LED EExd (stainless steel)	SM87LEDS	Only HXBS is available CSA certified. Only HXBA & XBTA is available UL certified.						
LED EExd (alloy)	SM87LEDA							
*XBT only available 24V d.c.								
*VNIPO Approved as standard.								
*prefix position with entry size code. e.g. 1R1B=20mm Right and Bottom entries.								
<b>Guard</b>	<b>Code</b>	<b>Label</b>	<b>Code</b>					
None	N	None	N					
Yes	Y	Yes	Y	(Please specify)				



All the above specifications, dimensions, weights and tolerances are nominal (typical) and MEDC reserve the right to vary all data without prior notice. No liability is accepted for any consequence of use.

# ROTATING BEACON EExd, Weatherproof TH12 Range



## Introduction

These certified rotating beacons have been designed for use in potentially explosive atmospheres and harsh environmental conditions. The enclosures are suitable for use offshore or onshore, where light weight combined with corrosion resistance is required.

The housing is manufactured completely from a U.V. stable, glass reinforced polyester. Stainless steel screws and mounting bracket are available ensuring a totally corrosion free product.

Units can be painted to customer specification and supplied with identification labels.

- ★ Zone 1 and Zone 2 use.
- ★ EExd, IIB T4 and T5.
- ★ ATEX approved, Ex II 2G.
- ★ BASEEFA Certified.
- ★ GOST 'R' Certified.
- ★ Inmetro Certified.
- ★ IP66 and IP67.
- ★ Certified temperature  $-55^{\circ}\text{C}$  to  $+70^{\circ}\text{C}$ .
- ★ 55W and 70W tungsten halogen bulb\*.
- ★ Various rotating speeds available.
- ★ Corrosion resistant GRP.
- ★ Optional stainless steel backstrap.
- ★ Various lens colours.
- ★ Optional lens guard.

\* Voltage dependent.

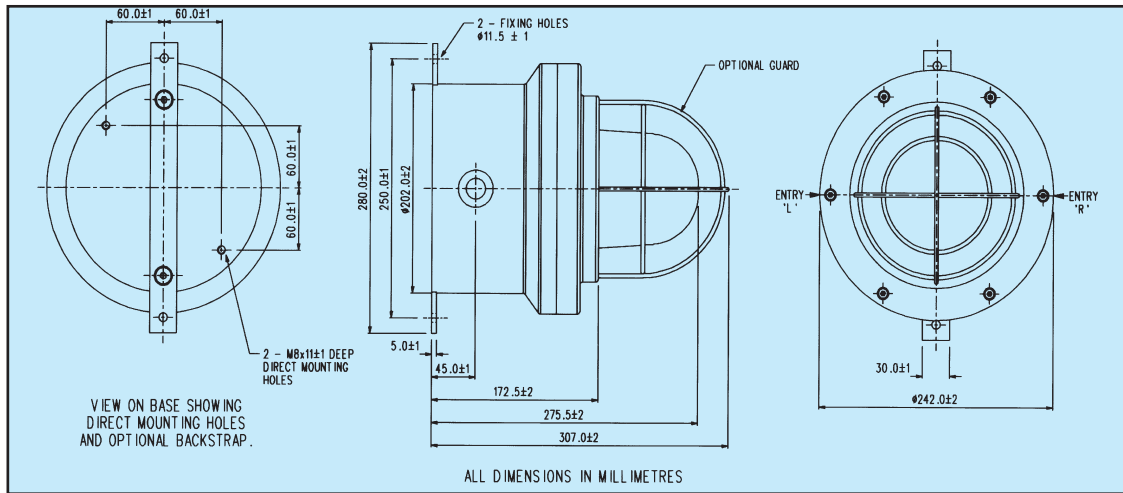
MEDC Ltd, Colliery Road,  
Pinxton, Nottingham NG16 6JF, UK.  
Tel: +44 (0)1773 864100  
Fax: +44 (0)1773 582800

MEDC International, 5829 West Sam Houston Parkway,  
North, Suite 1005, Houston, Texas 77041, USA.  
Tel: +1 (713) 937 9772  
Fax: +1 (713) 937 9773

MEDC Norway, Auglaendsmyråa 6,  
4016, Stavanger, Norge.  
Tel: +47 913 92 289  
Fax: +47 914 46 030

Sales Enq. Fax: +44 (0)1773 582830 Sales Orders Fax: +44 (0)1773 582832  
E-Mail: [sales@medc.com](mailto:sales@medc.com) Web: [www.medc.com](http://www.medc.com)





## Specification

Certification:	CENELEC 50015, 50018, 50019. Certification No. BAS99ATEX2196. EExd IIB T4 & T5. <b>GOST 'R' Certified:</b> 1Exd IIB T4/T5. <b>Inmetro Certified:</b> B R-Ex d IIB T3/T4/T5/T6.
Material:	Body: – Glass reinforced polyester (GRP). Lens: – Glass Cover screws and backstrap: – stainless steel 316.
Finish:	Natural black or painted to customer specification.
Weight:	7.6kg.
Certified Temperature:	-55°C to +70°C (T4), -55°C to +40°C (T5).
Ingress Protection:	IP66 & IP67.
Fire Retardancy:	GRP is fire retardant to ISO 1210.
Earth Continuity:	Optional for metal glands provided via a brass plate.
Terminals:	6 x 6.0mm <sup>2</sup> .
Labels:	Tag/duty label option.
Entries:	2 x M20 ISO.
Life:	We do not recommend the continuous use of the TH12 for over 3 hours as this could adversely affect its life.
Bulb Type:	70 Watt H1 tungsten halogen bulb (24V). 55 Watt H1 tungsten halogen bulb (12V).

Wattage	55W	70W	70W	70W
Voltage	12 d.c	24 d.c.	110 a.c.	240 a.c
Peak Current	4.85A	2.92A	0.64A	0.34A

Rotational Speed (r.p.m.)	60	120	180
Effective Intensity (Cd)	3354	1957	895
Peak Intensity (Cd)	11164	11164	11164

Note: The above figures (Cd) are for a 70W lamp with clear lens. Rotational speed may vary by ±20% of the stated r.p.m.

For coloured lenses

Colour	Red	Blue	Amber	Green	Yellow
Multiplying Factor	0.15	0.12	0.51	0.49	0.86

The photometric data has been verified by BSI, a report of which is available if required.

## Ordering Requirements

The following code is designed to help in the selection of the correct unit. Build up the reference number by inserting the code for each component into the appropriate box. **For standard products, available ex-stock, contact sales office for details.**

Model	Certification	Speed	Voltage	Lens Colour	Lens Guard	Unit Fixing	Options	Unit Finish																																																																					
TH12	<input type="text"/>	<input type="text"/>	<input type="text"/>	<input type="text"/>	<input type="text"/>	<input type="text"/>	<input type="text"/>	<input type="text"/>																																																																					
<table border="1"> <tr><th colspan="2">Certification Code</th></tr> <tr><td>ATEX</td><td>B</td></tr> <tr><td>GOST 'R'</td><td>G</td></tr> <tr><td>Inmetro</td><td>DM</td></tr> </table>		Certification Code		ATEX	B	GOST 'R'	G	Inmetro	DM	<table border="1"> <tr><th colspan="2">Speed Code</th></tr> <tr><td>60 r.p.m.</td><td>A</td></tr> <tr><td>120 r.p.m.</td><td>B</td></tr> <tr><td>180 r.p.m.*</td><td>C</td></tr> <tr><td colspan="2">*Not available 110V a.c.</td></tr> </table>		Speed Code		60 r.p.m.	A	120 r.p.m.	B	180 r.p.m.*	C	*Not available 110V a.c.		<table border="1"> <tr><th colspan="2">Colour Code</th></tr> <tr><td>Red</td><td>R</td></tr> <tr><td>Blue</td><td>B</td></tr> <tr><td>Green</td><td>G</td></tr> <tr><td>Amber</td><td>A</td></tr> <tr><td>Yellow</td><td>Y</td></tr> <tr><td>Clear</td><td>C</td></tr> </table>		Colour Code		Red	R	Blue	B	Green	G	Amber	A	Yellow	Y	Clear	C	<table border="1"> <tr><th colspan="2">Guard Code</th></tr> <tr><td>None</td><td>N</td></tr> <tr><td>Yes</td><td>Y</td></tr> </table>		Guard Code		None	N	Yes	Y	<table border="1"> <tr><th colspan="2">Label Code</th></tr> <tr><td>Tag Label</td><td>T*</td></tr> <tr><td>Duty Label</td><td>D*</td></tr> <tr><td>Earth Continuity</td><td>E</td></tr> <tr><td>None</td><td>N</td></tr> <tr><td colspan="2">*Please specify wording</td></tr> </table>		Label Code		Tag Label	T*	Duty Label	D*	Earth Continuity	E	None	N	*Please specify wording		<table border="1"> <tr><th colspan="2">Finish Code</th></tr> <tr><td>Natural Black</td><td>N</td></tr> <tr><td>Red</td><td>R</td></tr> <tr><td>Blue</td><td>B</td></tr> <tr><td>Yellow</td><td>Y</td></tr> <tr><td>Grey</td><td>G</td></tr> <tr><td>White</td><td>W</td></tr> <tr><td>Special Finish</td><td>S</td></tr> </table>		Finish Code		Natural Black	N	Red	R	Blue	B	Yellow	Y	Grey	G	White	W	Special Finish	S
Certification Code																																																																													
ATEX	B																																																																												
GOST 'R'	G																																																																												
Inmetro	DM																																																																												
Speed Code																																																																													
60 r.p.m.	A																																																																												
120 r.p.m.	B																																																																												
180 r.p.m.*	C																																																																												
*Not available 110V a.c.																																																																													
Colour Code																																																																													
Red	R																																																																												
Blue	B																																																																												
Green	G																																																																												
Amber	A																																																																												
Yellow	Y																																																																												
Clear	C																																																																												
Guard Code																																																																													
None	N																																																																												
Yes	Y																																																																												
Label Code																																																																													
Tag Label	T*																																																																												
Duty Label	D*																																																																												
Earth Continuity	E																																																																												
None	N																																																																												
*Please specify wording																																																																													
Finish Code																																																																													
Natural Black	N																																																																												
Red	R																																																																												
Blue	B																																																																												
Yellow	Y																																																																												
Grey	G																																																																												
White	W																																																																												
Special Finish	S																																																																												
<table border="1"> <tr><th colspan="2">Voltage Code</th></tr> <tr><td>12V d.c.*</td><td>012</td></tr> <tr><td>24V d.c.†</td><td>024</td></tr> <tr><td>110V a.c.†</td><td>110</td></tr> <tr><td>240V a.c.†</td><td>240</td></tr> <tr><td colspan="2">*55W only available 12V d.c.</td></tr> <tr><td colspan="2">†70W only available 24V d.c., 110V a.c. &amp; 240V a.c.</td></tr> </table>			Voltage Code		12V d.c.*	012	24V d.c.†	024	110V a.c.†	110	240V a.c.†	240	*55W only available 12V d.c.		†70W only available 24V d.c., 110V a.c. & 240V a.c.		<table border="1"> <tr><th colspan="2">Unit Fixing Code</th></tr> <tr><td>Direct Mounting</td><td>D</td></tr> <tr><td>Backstrap</td><td>B</td></tr> </table>		Unit Fixing Code		Direct Mounting	D	Backstrap	B																																																					
Voltage Code																																																																													
12V d.c.*	012																																																																												
24V d.c.†	024																																																																												
110V a.c.†	110																																																																												
240V a.c.†	240																																																																												
*55W only available 12V d.c.																																																																													
†70W only available 24V d.c., 110V a.c. & 240V a.c.																																																																													
Unit Fixing Code																																																																													
Direct Mounting	D																																																																												
Backstrap	B																																																																												



All the above specifications, dimensions, weights and tolerances are nominal (typical) and MEDC reserve the right to vary all data without prior notice. No liability is accepted for any consequence of use.

# 21 JOULE XENON BEACONS

## Exd(e), Weatherproof XB4 Range



### Introduction

These **high output (21 Joule)** beacons have been designed for use in potentially explosive atmospheres and harsh environmental conditions. The marine grade alloy or stainless steel enclosures are suitable for use offshore or onshore, where light weight combined with corrosion resistance and strength is required. Units can be painted to customer specification and fitted with identification labels.

Available with optional Exe terminal chamber.

- ★ Zone 1 and Zone 2 use.
- ★ Exde IICT5.
- ★ ATEX approved Ex II 2GD.
- ★ BASEEFA certified.
- ★ UL Listed for USA and Canada
  - Hazardous locations:
    - Class I, Div 1, Groups C & D.
    - Class I, Zone 1, AExd IIB T4.
  - Ordinary locations: Visual-Signal Device.
- ★ GOST 'R' Certified.
- ★ Brazilian (Inmetro) Certified.
- ★ Australian (SAA) certified.
- ★ \*Certified temperature  $-55^{\circ}\text{C}$  to  $+70^{\circ}\text{C}$ .
- ★ IP67 and IP66.
- ★ Stainless steel or marine grade alloy.
- ★ Various lens colours.
- ★ Twin replaceable tubes.
- ★ Exde version has gland earth continuity in the GRP terminal chamber.
- ★ Tapered spigot flamepath.
- ★ Telephone or relay initiated option.
- ★ Optional lens guard.

\*Depending on version.

MEDC Ltd, Colliery Road,  
Pinxton, Nottingham NG16 6JF, UK.  
Tel: +44 (0)1773 864100  
Fax: +44 (0)1773 582800

MEDC International, 5829 West Sam Houston Parkway,  
North, Suite 1005, Houston, Texas 77041, USA.  
Tel: +1 (713) 937 9772  
Fax: +1 (713) 937 9773

MEDC Norway, Auglaendsmyråa 6,  
4016, Stavanger, Norge.  
Tel: +47 913 92 289  
Fax: +47 914 46 030

Sales Enq. Fax: +44 (0)1773 582830 Sales Orders Fax: +44 (0)1773 582832  
E-Mail: sales@medc.com Web: www.medc.com



## Specification

Voltage	DC			AC 50/60 Hz				
	24	48	110	110	120	220	240	254
Tube Energy (Joules)	21	21	21	21	21	21	21	21
Peak Current Consumption (mA)	1400	540	240	350	450	240	185	210
Effective Intensity (Cd)	355	355	355	355	355	355	355	355
Peak Intensity (Cd)	123691	123691	123691	123691	123691	123691	123691	123691

NOTE: The above figures (Cd) are for a clear lens @ 1Hz flash rate.

The photometric data has been verified by BSI. A report is available if required.

FOR COLOURED LENSES

Colour	Red	Blue	Amber	Green	Yellow
Multiplying Factor (Approximate)	0.15	0.12	0.51	0.49	0.86

Telephone initiation or relay interface:

Initiation by telephone ringing tone or low voltage control signals, plus initiation of a second beacon or sounder.

Certification: CENELEC EN60079-0:2006, EN60079-1:2004  
EN60079-7:2007, EN61241-0:2006, EN61241-1:2004  
Certification Baseefa02ATEX0224X.  
ATEX Exd IIC T5 or Exde IIC T5.

**UL Listed for USA and Canada**

– Hazardous locations:

Class I, Div 1 Groups C-D  
Class I, Zone 1.

Listing No. E187894.

– Ordinary locations: Visual-Signal Device.

Listing No. S8128.

Refer to UL data sheet at rear of catalogue for complete information.

**GOST 'R' Certification:** 1 Exd IIC T4, Russian Fire Approved (VNIPO).

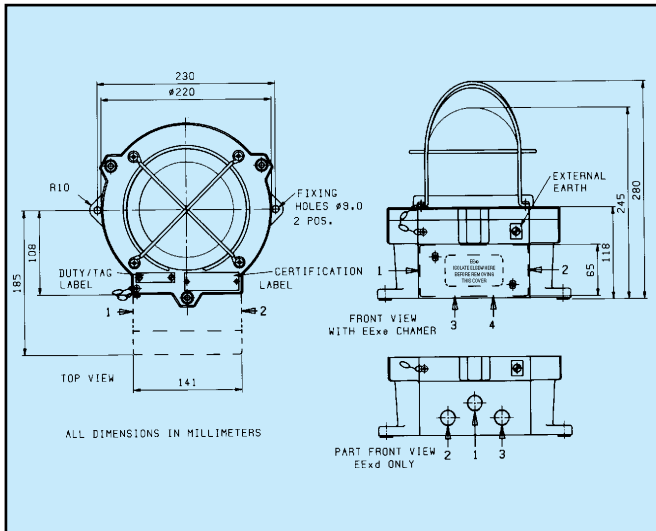
**Australian Certification:** Contact MEDC for specification.

**Brazilian (Inmetro) Certification:** BR-Ex d IIC T3/T4/T5/T6.

BR-Ex de IIC T3/T4/T5/T6.

Certified Temperature:

UL –25°C to +70°C BASEEFA & GOST–50°C to +55°C (Exde).  
–55°C to +55°C (Exd).



Terminals: Exe: 6 off suitable for up to 6mm<sup>2</sup> cable. (With telephone initiate 10 x 2.5mm<sup>2</sup>).  
Exd: 8 off suitable for up to 6mm<sup>2</sup> cable.

Entries: Up to 3 x 20mm or 2 x 25mm ISO in Exd unit.  
Up to 4 x 20mm or 4 x 25mm ISO in Exe unit.

Materials: LM25TF Marine Grade Alloy body.  
Grade 316 ANC4B Stainless Steel body.  
Glass reinforced polyester (GRP) terminal chamber.  
Toughened Wellglass.

Weights: Exd: 6.6kg. xde: 7.6kg. Add 8.4kg for stainless steel version.

Finish: Red epoxy paint finish as standard or to customer's specification.

## Ordering Requirements

The following code is designed to help in the selection of the correct unit. Build up the reference number by inserting the code for each component into the appropriate box. **For standard products, available ex-stock, contact sales office for details.**

Type	Certification	Voltage	Terminals	Cable Entries	Flash Rate	Initiate Options	Lens Guard	Lens Colour	Tag/Duty Label	Material	Finish																																																																												
<b>XB4</b>																																																																																							
<table border="1"> <thead> <tr> <th>Voltage</th> <th>Code</th> </tr> </thead> <tbody> <tr><td>24VDC</td><td>B</td></tr> <tr><td>48VDC</td><td>C</td></tr> <tr><td>110VDC</td><td>D</td></tr> <tr><td>110VAC</td><td>E</td></tr> <tr><td>120VAC</td><td>F</td></tr> <tr><td>220VAC</td><td>G</td></tr> <tr><td>240VAC</td><td>H</td></tr> <tr><td>254VAC</td><td>J</td></tr> </tbody> </table>		Voltage	Code	24VDC	B	48VDC	C	110VDC	D	110VAC	E	120VAC	F	220VAC	G	240VAC	H	254VAC	J	<table border="1"> <thead> <tr> <th>Entries</th> <th>Code</th> </tr> </thead> <tbody> <tr><td>20mm</td><td>*B</td></tr> <tr><td>25mm</td><td>*C</td></tr> <tr><td>1/2" NPT</td><td>*D</td></tr> <tr><td>3/4" NPT</td><td>*E</td></tr> </tbody> </table> <p>*prefix entry size (see diagram above) with entry position code e.g. 1B2B.</p>		Entries	Code	20mm	*B	25mm	*C	1/2" NPT	*D	3/4" NPT	*E	<table border="1"> <thead> <tr> <th>Flash Rate</th> <th>Code</th> </tr> </thead> <tbody> <tr><td>60/min.</td><td>06</td></tr> <tr><td>120/min.</td><td>12</td></tr> <tr><td>240/min.</td><td>24</td></tr> </tbody> </table>		Flash Rate	Code	60/min.	06	120/min.	12	240/min.	24	<table border="1"> <thead> <tr> <th>Initiate Options (XB4 only)</th> <th>Code</th> </tr> </thead> <tbody> <tr><td>None</td><td>A</td></tr> <tr><td>Telephone</td><td>B</td></tr> <tr><td>Telephone &amp; 2nd Beacon/Sounder</td><td>C</td></tr> <tr><td>*Relay (12V–48VAC/DC)</td><td>D</td></tr> <tr><td>*Relay (12V–48VAC/DC) &amp; 2nd Beacon/Sounder</td><td>E</td></tr> </tbody> </table> <p>*Specify AC/DC voltage</p>		Initiate Options (XB4 only)	Code	None	A	Telephone	B	Telephone & 2nd Beacon/Sounder	C	*Relay (12V–48VAC/DC)	D	*Relay (12V–48VAC/DC) & 2nd Beacon/Sounder	E	<table border="1"> <thead> <tr> <th>Colour</th> <th>Code</th> </tr> </thead> <tbody> <tr><td>Red</td><td>R</td></tr> <tr><td>Blue</td><td>B</td></tr> <tr><td>Green</td><td>G</td></tr> <tr><td>Yellow</td><td>Y</td></tr> <tr><td>Amber</td><td>A</td></tr> <tr><td>Clear</td><td>C</td></tr> </tbody> </table>		Colour	Code	Red	R	Blue	B	Green	G	Yellow	Y	Amber	A	Clear	C	<table border="1"> <thead> <tr> <th>Finish</th> <th>Code</th> </tr> </thead> <tbody> <tr><td>Red</td><td>R</td></tr> <tr><td>Blue</td><td>B</td></tr> <tr><td>Yellow</td><td>Y</td></tr> <tr><td>Grey</td><td>G</td></tr> <tr><td>White</td><td>W</td></tr> <tr><td>Other – specify</td><td>S</td></tr> </tbody> </table>		Finish	Code	Red	R	Blue	B	Yellow	Y	Grey	G	White	W	Other – specify	S
Voltage	Code																																																																																						
24VDC	B																																																																																						
48VDC	C																																																																																						
110VDC	D																																																																																						
110VAC	E																																																																																						
120VAC	F																																																																																						
220VAC	G																																																																																						
240VAC	H																																																																																						
254VAC	J																																																																																						
Entries	Code																																																																																						
20mm	*B																																																																																						
25mm	*C																																																																																						
1/2" NPT	*D																																																																																						
3/4" NPT	*E																																																																																						
Flash Rate	Code																																																																																						
60/min.	06																																																																																						
120/min.	12																																																																																						
240/min.	24																																																																																						
Initiate Options (XB4 only)	Code																																																																																						
None	A																																																																																						
Telephone	B																																																																																						
Telephone & 2nd Beacon/Sounder	C																																																																																						
*Relay (12V–48VAC/DC)	D																																																																																						
*Relay (12V–48VAC/DC) & 2nd Beacon/Sounder	E																																																																																						
Colour	Code																																																																																						
Red	R																																																																																						
Blue	B																																																																																						
Green	G																																																																																						
Yellow	Y																																																																																						
Amber	A																																																																																						
Clear	C																																																																																						
Finish	Code																																																																																						
Red	R																																																																																						
Blue	B																																																																																						
Yellow	Y																																																																																						
Grey	G																																																																																						
White	W																																																																																						
Other – specify	S																																																																																						
<table border="1"> <thead> <tr> <th>Certification</th> <th>Code</th> </tr> </thead> <tbody> <tr><td>ATEX</td><td>B</td></tr> <tr><td>UL</td><td>UL*</td></tr> <tr><td>UL (ordinary locations)</td><td>UW*</td></tr> <tr><td>GOST 'R' Exd</td><td>G†</td></tr> <tr><td>Inmetro</td><td>M</td></tr> </tbody> </table> <p>*UL - available alloy or stainless steel. - 24v d.c., 110v a.c., - 240v a.c. only. † - VNIPO approved as standard.</p>		Certification	Code	ATEX	B	UL	UL*	UL (ordinary locations)	UW*	GOST 'R' Exd	G†	Inmetro	M	<table border="1"> <thead> <tr> <th>Terminals &amp; Type</th> <th>Code</th> </tr> </thead> <tbody> <tr><td>6 x 6mm<sup>2</sup> (Exe)</td><td>6E*</td></tr> <tr><td>8 x 6mm<sup>2</sup> (Exd)</td><td>8D</td></tr> </tbody> </table> <p>*UL and GOST not available Exe.</p>		Terminals & Type	Code	6 x 6mm <sup>2</sup> (Exe)	6E*	8 x 6mm <sup>2</sup> (Exd)	8D	<table border="1"> <thead> <tr> <th>Lens Guard</th> <th>Code</th> </tr> </thead> <tbody> <tr><td>None</td><td>N</td></tr> <tr><td>Yes</td><td>Y</td></tr> </tbody> </table>		Lens Guard	Code	None	N	Yes	Y	<table border="1"> <thead> <tr> <th>Material</th> <th>Code</th> </tr> </thead> <tbody> <tr><td>Stainless steel</td><td>0</td></tr> <tr><td>Alloy</td><td>1</td></tr> </tbody> </table>		Material	Code	Stainless steel	0	Alloy	1																																																		
Certification	Code																																																																																						
ATEX	B																																																																																						
UL	UL*																																																																																						
UL (ordinary locations)	UW*																																																																																						
GOST 'R' Exd	G†																																																																																						
Inmetro	M																																																																																						
Terminals & Type	Code																																																																																						
6 x 6mm <sup>2</sup> (Exe)	6E*																																																																																						
8 x 6mm <sup>2</sup> (Exd)	8D																																																																																						
Lens Guard	Code																																																																																						
None	N																																																																																						
Yes	Y																																																																																						
Material	Code																																																																																						
Stainless steel	0																																																																																						
Alloy	1																																																																																						
<table border="1"> <thead> <tr> <th>Duty Label</th> <th>Code</th> </tr> </thead> <tbody> <tr><td>None</td><td>N</td></tr> <tr><td>Yes</td><td>Y</td></tr> </tbody> </table> <p>(Please specify)</p>		Duty Label	Code	None	N	Yes	Y																																																																																
Duty Label	Code																																																																																						
None	N																																																																																						
Yes	Y																																																																																						

All the above specifications, dimensions, weights and tolerances are nominal (typical) and MEDC reserve the right to vary all data without prior notice. No liability is accepted for any consequence of use.





# ROTATING BEACONS EExd(e), Weatherproof XB5 & TH5 Ranges



## Introduction

These certified rotating beacons have been designed for use in flammable atmospheres and harsh environmental conditions. The marine grade alloy enclosures are suitable for use offshore or onshore, where light weight combined with corrosion resistance and strength is required. Units can be painted to customer specification and fitted with identification labels.

There are two models available,

- (1) standard rotating mirror with tungsten halogen bulb.
- (2) sequenced flashing xenon tubes.

Both models are available with optional EExe terminal chamber.

- ★ Zone 1 use.
- ★ EExde IIBT4/T6.
- ★ ATEX approved Ex II 2G.
- ★ BASEEFA certified.
- ★ Certified temperature  $-20^{\circ}\text{C}$  to  $+55^{\circ}\text{C}^*$ .
- ★ IP66, IP67 and IP68.
- ★ Corrosion Resistant.
- ★ EExde version has gland earth continuity in the GRP terminal chamber.
- ★ Optional guard.
- ★ Retained cover screws.
- ★ Various lens colours.

\*Model dependent.

MEDC Ltd, Colliery Road,  
Pinxton, Nottingham NG16 6JF, UK.  
Tel: +44 (0)1773 864100  
Fax: +44 (0)1773 582800

MEDC International, 5829 West Sam Houston Parkway,  
North, Suite 1005, Houston, Texas 77041, USA.  
Tel: +1 (713) 937 9772  
Fax: +1 (713) 937 9773

MEDC Norway, Auglaendsmyråa 6,  
4016, Stavanger, Norge.  
Tel: +47 913 92 289  
Fax: +47 914 46 030

Sales Enq. Fax: +44 (0)1773 582830 Sales Orders Fax: +44 (0)1773 582832  
E-Mail: [sales@medc.com](mailto:sales@medc.com) Web: [www.medc.com](http://www.medc.com)



# Specification

## Model: XB5 Sequenced flashing xenon tubes.

Voltage	DC			AC 50/60 Hz				
	24	48	110	110	120	220	240	254
Tube Energy (Joules)	5	5	5	5	5	5	5	5
Peak Current Consumption (mA)	1300	650	300	500	450	240	230	210
Effective Intensity (Cd)	86	86	86	86	86	86	86	86
Peak Intensity (Cd)	45683	45683	45683	45683	45683	45683	45683	45683

NOTE: The above figures (Cd) are for a clear lens @ 1Hz flash rate.\*

## Model: TH5 Rotating Mirror.

Wattage	55W	70W	70W	70W	70W
Voltage	12d.c	24d.c.	110a.c.	220a.c.	240a.c.
Peak Current Consumption (A)	4.58	2.92	0.64	0.31	0.34

Rotational Speed (rpm)	60	120	180
Effective Intensity (Cd)	3354	1957	895
Peak Intensity (Cd)	11164	11164	11164

Note: The above figures (Cd) are for a 70W lamp with clear lens.

The photometric data given above has been verified by BSI. Reports are available if required.

Terminals: EExe: 6 off suitable for up to 6mm<sup>2</sup> cable.  
EExd: 6 off suitable for up to 6mm<sup>2</sup> cable.

Entries: Up to 3 x 20mm ISO or 2 x 25mm ISO in EExd unit.  
Up to 4 x 20mm ISO or 4 x 25mm ISO in EExe unit.

Materials: LM25 TF marine grade alloy body.  
Glass reinforced polyester (GRP) terminal chamber.  
Toughened Wellglass.

Ingress Protection: IP66, IP67 and IP68.

Weight: XB5 14.6Kg; TH5 14.9Kg. Add 1Kg for EExde versions.

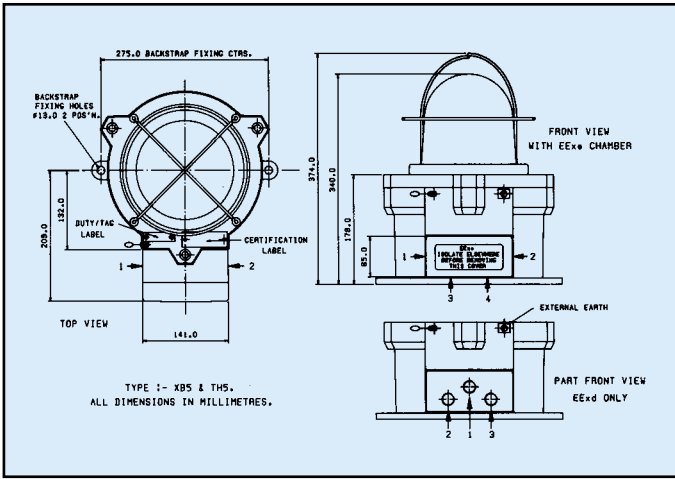
Finish: Epoxy paint finish as standard or to customer's specification.

Certification: CENELEC – EN50014, EN50018, EN50019.  
Certificate No. Baseefa02ATEX0225X.  
BASEEFA – EExd IIB T4/T6 or EExde IIB T4/T6.

Certified Temperature: –20°C to +55°C (TH5) –20°C to +40°C (XB5).

Life: We do not recommend the continuous use of the TH5 for over 3 hours as this could adversely affect its life.

Rotational speed (TH5) may vary by ±20% of stated R.P.M.



TEMPERATURE RATINGS			
TYPE	voltage/wattage	T CLASS	AMB.
XB5	DC Units	T6	40°C
	AC Units	T6	40°C
TH5	DC Units	T4	55°C
	AC Units	T4	55°C

### \* FOR COLOURED LENSES

Colour	Red	Blue	Amber	Green	Yellow
Multiplying Factor (Approximate)	0.15	0.12	0.51	0.49	0.86

## Ordering Requirements:

The following code is designed to help in selection of the correct unit. Build up the reference number by inserting the code for each component into the appropriate box.

Model	Rotational Speed (TH5 only)	Terminal Chamber	Voltage	Entries	Lens Colour	Tag Label	Guard	Finish
Model XB5 TH5	Rotational Speed 60 r.p.m. 1 120 r.p.m. 2 *180 r.p.m. 3 *Not available 110V	Terminal Chamber EExd D EExde E	Voltage 12VDC A 24VDC B 48VDC (not TH5) C 110VDC (not TH5) D 110VAC E 120VAC (not TH5) F 220VAC G 240VAC H 254VAC (not TH5) J	Entries 20mm *B 25mm *C *Prefix entry size (see diagram above) with entry position code. e.g. 1B, 2B.	Colour Red R Blue B Green G Yellow Y Amber A Clear C	Label None N Yes Y (Please specify wording)	Guard None 0 Guard 1	Colour Red R Grey G Blue B Yellow Y White W Other S (Please specify)



All the above specifications, dimensions, weights and tolerances are nominal (typical) and MEDC reserve the right to vary all data without prior notice. No liability is accepted for any consequence of use.

# 0.5 JOULE XENON BEACONS

Intrinsically Safe (EExia), Weatherproof  
XB8 Range



Highest Intensity  
IS Beacon  
Available

## Introduction

This range of ruggedised, intrinsically safe and weatherproof beacons, intended for use in potentially explosive atmospheres, has been designed with high ingress protection to cope with the harsh environmental conditions found offshore and onshore in the oil, gas and petrochemical industries.

The unit is available in 12V and 24V versions and for gas groups IIB or IIC.

A lower cost, uncertified version is available for use in non-explosive atmospheres.

- ★ Zones 0, 1, 2 & safe area use.
- ★ EExia IIB/IIC T4.
- ★ ATEX approved, Ex II 1G.
- ★ BASEEFA certified.
- ★ GOST 'R' certified.
- ★ IP66 & IP67.
- ★ Certified temperature  $-55^{\circ}\text{C}$  to  $+60^{\circ}\text{C}$ .
- ★ Corrosion resistant GRP body.
- ★ High intensity flash.
- ★ Clear polycarbonate lens.
- ★ Retained stainless steel cover screws.
- ★ Encapsulated electronics.

MEDC Ltd, Colliery Road,  
Pinxton, Nottingham NG16 6JF, UK.  
Tel: +44 (0)1773 864100  
Fax: +44 (0)1773 582800

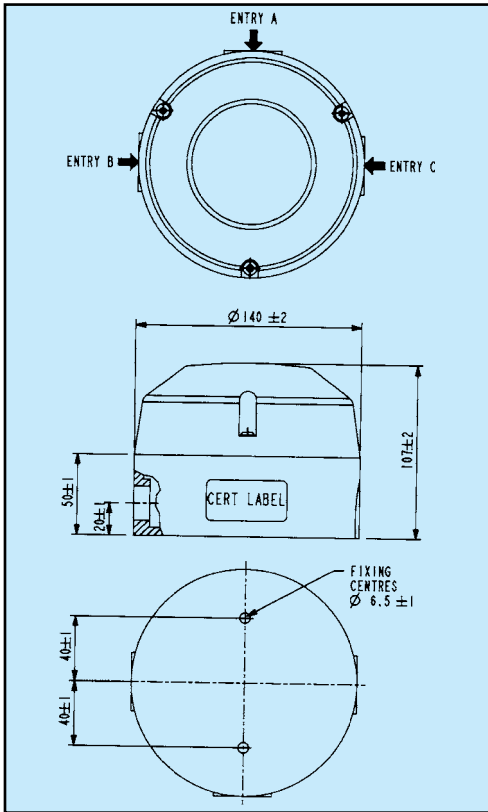
MEDC International, 5829 West Sam Houston Parkway,  
North, Suite 1005, Houston, Texas 77041, USA.  
Tel: +1 (713) 937 9772  
Fax: +1 (713) 937 9773

MEDC Norway, Auglaendsmyraa 6,  
4016, Stavanger, Norge.  
Tel: +47 913 92 289  
Fax: +47 914 46 030

Sales Enq. Fax: +44 (0)1773 582830 Sales Orders Fax: +44 (0)1773 582832  
E-Mail: sales@medc.com Web: www.medc.com

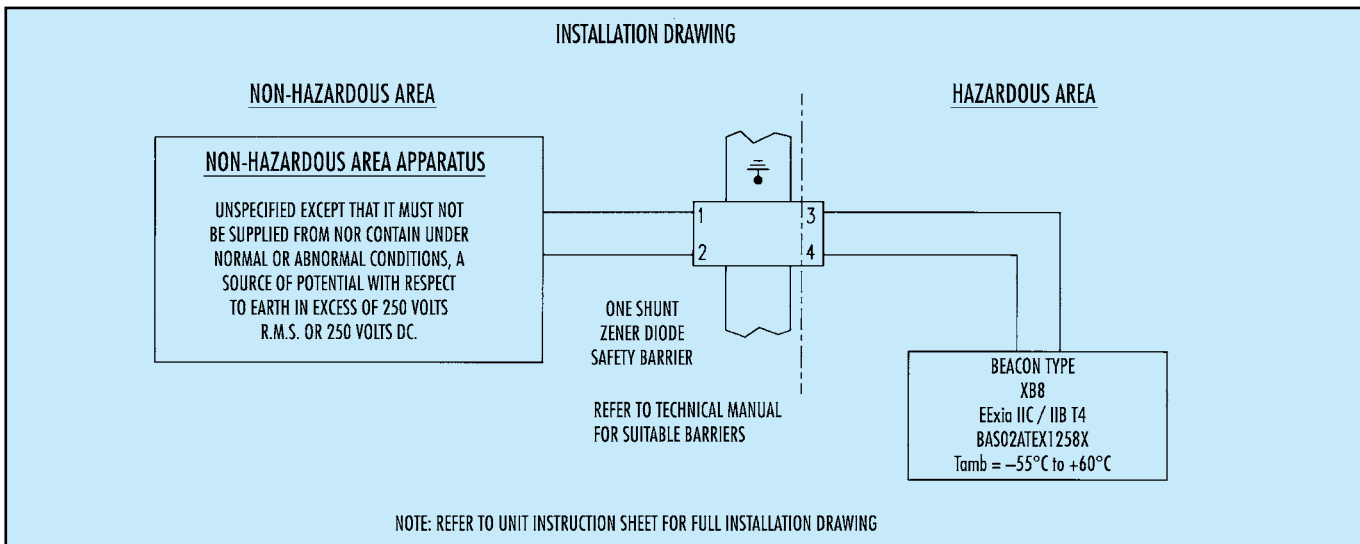
The MEDC logo, consisting of the word 'MEDC' in a bold, red, sans-serif font, enclosed within a red rounded rectangular border.

6DS090/K



## Specification

Certification:	CENELEC EN50014, 20 & 39. Certificate No. BAS02ATEX1258X. EExia IIC T4 or EExia IIB T4. Zones 0, 1 & 2. <b>GOST 'R' Certification:</b> 0Exia IIB T4 & 0Exia IIC T4, Cert. No. A-0757.
Material:	UV stable glass reinforced polyester body. Clear polycarbonate cover/lens. Retained stainless steel cover screws.
Finish:	Painted red as standard or to Customer's specification.
Tube Energy:	IIB version 0.5 Joules. IIC version 0.4 Joules.
Weight:	1.4 kg.
Certified Temperature:	-55°C to +60°C.
Ingress Protection:	IP66 & IP67.
Tube Life:	>1 x 10 <sup>6</sup> flashes.
Voltage:	12V or 24V via suitable barrier.
Current Consumption:	24V IIB model - 71mA max. nominal. 24V IIC model - 55mA max. nominal. 12V IIB & IIC models - 52mA max. nominal.
Tube Type:	Xenon discharge.
Lens Colour:	Clear as standard. Coloured options available.
Terminals:	8 x 2.5mm <sup>2</sup> .
Flash Rate:	1 flash per second.
Labels:	Duty and tag labels available.
Cable Entries:	Up to 3 x M20 via knockouts.



## Ordering Requirements

The following code is designed to help in the selection of the correct unit. Build up the reference number by inserting the code for each component into the appropriate box. **For standard products, available ex-stock, contact sales office for details.**

Unit Type	Certification	Voltage	Lens Colour	Labels	Body Colour																																										
<input type="text" value="XB8"/>	<input type="text"/>	<input type="text"/>	<input type="text"/>	<input type="text"/>	<input type="text"/>																																										
	<table border="1" style="width: 100%; border-collapse: collapse;"> <thead> <tr> <th>Certification</th> <th>Code</th> </tr> </thead> <tbody> <tr><td>BASEEFA IIB</td><td>BB</td></tr> <tr><td>BASEEFA IIC</td><td>BC</td></tr> <tr><td>GOST 'R' IIB</td><td>GB</td></tr> <tr><td>GOST 'R' IIC</td><td>GC</td></tr> </tbody> </table>	Certification	Code	BASEEFA IIB	BB	BASEEFA IIC	BC	GOST 'R' IIB	GB	GOST 'R' IIC	GC	<table border="1" style="width: 100%; border-collapse: collapse;"> <thead> <tr> <th>Voltage</th> <th>Code</th> </tr> </thead> <tbody> <tr><td>12V</td><td>012</td></tr> <tr><td>24V</td><td>024</td></tr> </tbody> </table>	Voltage	Code	12V	012	24V	024	<table border="1" style="width: 100%; border-collapse: collapse;"> <thead> <tr> <th>Colour</th> <th>Code</th> </tr> </thead> <tbody> <tr><td>Clear (Standard)</td><td>C</td></tr> <tr><td>Special</td><td>S*</td></tr> <tr><td colspan="2">*Please specify</td></tr> </tbody> </table>	Colour	Code	Clear (Standard)	C	Special	S*	*Please specify		<table border="1" style="width: 100%; border-collapse: collapse;"> <thead> <tr> <th>Label</th> <th>Code</th> </tr> </thead> <tbody> <tr><td>Duty</td><td>D*</td></tr> <tr><td>Tag</td><td>T*</td></tr> <tr><td>None</td><td>N</td></tr> <tr><td colspan="2">*Please specify wording</td></tr> </tbody> </table>	Label	Code	Duty	D*	Tag	T*	None	N	*Please specify wording		<table border="1" style="width: 100%; border-collapse: collapse;"> <thead> <tr> <th>Colour</th> <th>Code</th> </tr> </thead> <tbody> <tr><td>Painted Red</td><td>R</td></tr> <tr><td>Special</td><td>S*</td></tr> <tr><td colspan="2">*Please specify</td></tr> </tbody> </table>	Colour	Code	Painted Red	R	Special	S*	*Please specify	
Certification	Code																																														
BASEEFA IIB	BB																																														
BASEEFA IIC	BC																																														
GOST 'R' IIB	GB																																														
GOST 'R' IIC	GC																																														
Voltage	Code																																														
12V	012																																														
24V	024																																														
Colour	Code																																														
Clear (Standard)	C																																														
Special	S*																																														
*Please specify																																															
Label	Code																																														
Duty	D*																																														
Tag	T*																																														
None	N																																														
*Please specify wording																																															
Colour	Code																																														
Painted Red	R																																														
Special	S*																																														
*Please specify																																															



All the above specifications, dimensions, weights and tolerances are nominal (typical) and MEDC reserve the right to vary all data without prior notice. No liability is accepted for any consequence of use.

# 5 JOULE XENON BEACONS

## EExd, Weatherproof

### XB9 Range



- ★ All GRP
- ↓
- ★ Low Initial Cost
- ↓
- ★ Greater Reliability
- ↓
- ★ Minimal Maintenance Cost
- ↓
- ★ Reduced Cost of Ownership

## Introduction

These compact and lightweight beacons have been designed for use in potentially explosive atmospheres and harsh environmental conditions. The beacon housing, including the flamepaths, is manufactured completely from a UV stable glass reinforced polyester which is ideally suited for use offshore and onshore.

Stainless Steel screws and mounting bracket are incorporated ensuring a totally corrosion free unit.

Units can be painted to customer specification and supplied with identification labels.

- ★ Zone 1 and Zone 2 use.
- ★ EExd IIC T6.
- ★ ATEX Approved, Ex II 2G.
- ★ BASEEFA Certified.
- ★ GOST 'R' Certified.
- ★ Brazilian (Inmetro) Certified.
- ★ IP66 and IP67.
- ★ Certified Temperature -55°C to +55°C.
- ★ Corrosion Free GRP.
- ★ Various lens colours.
- ★ Lens guard fitted as standard.
- ★ Optional gland plus cable tail.
- ★ Stainless steel mounting bracket & screws.

MEDC Ltd, Colliery Road,  
Pinxton, Nottingham NG16 6JF, UK.  
Tel: +44 (0)1773 864100  
Fax: +44 (0)1773 582800

MEDC International, 5829 West Sam Houston Parkway,  
North, Suite 1005, Houston, Texas 77041, USA.  
Tel: +1 (713) 937 9772  
Fax: +1 (713) 937 9773

MEDC Norway, Auglaendsmyråa 6,  
4016, Stavanger, Norge.  
Tel: +47 913 92 289  
Fax: +47 914 46 030

Sales Enq. Fax: +44 (0)1773 582830 Sales Orders Fax: +44 (0)1773 582832  
E-Mail: [sales@medc.com](mailto:sales@medc.com) Web: [www.medc.com](http://www.medc.com)



## Specification

**Certification:** CENELEC EN50014 and EN50018.  
BASEEFA EExd II CT6 (T5).  
Cert. No. BAS00ATEX2031 Zone 1 and Zone 2.  
GOST 'R' Certification: 1 Exd IIC T5/T6  
Brazilian (Inmetro) Certified: BR-Ex d IIC T5/T6

**Materials:** Body & Cover - Glass Reinforced Polyester (GRP).  
Lens - Toughened Glass.  
Cover Screws & Bracket - Stainless Steel 316

**Finish:** Natural or painted to customer requirements.

Voltage	DC			AC 50/60 Hz	
	12	24	48	110	240/254
Tube Energy (J)	5	5	5	5	5
Peak Current Consumption (A)	0.74	0.32	0.18	0.1	0.06
Effective Intensity (Cd)	29	29	29	29	29
Peak Intensity (Cd)	22213	22213	22213	22213	22213
Power Consumption (W)	9	8	9	11	15

NOTE: The above figures (Cd) are for a clear lens @ 1Hz flash rate.  
A report is available if required.

### For Coloured Lenses:

Colour	Red	Blue	Amber	Green	Yellow
Multiplying Factors (Approximate)	0.15	0.12	0.51	0.49	0.86

Weight: 1.6kg.

Certified Temperature: -55°C to +40°C(T6). -55°C to +55°C (T5).

Ingress Protection: IP66 & IP67.

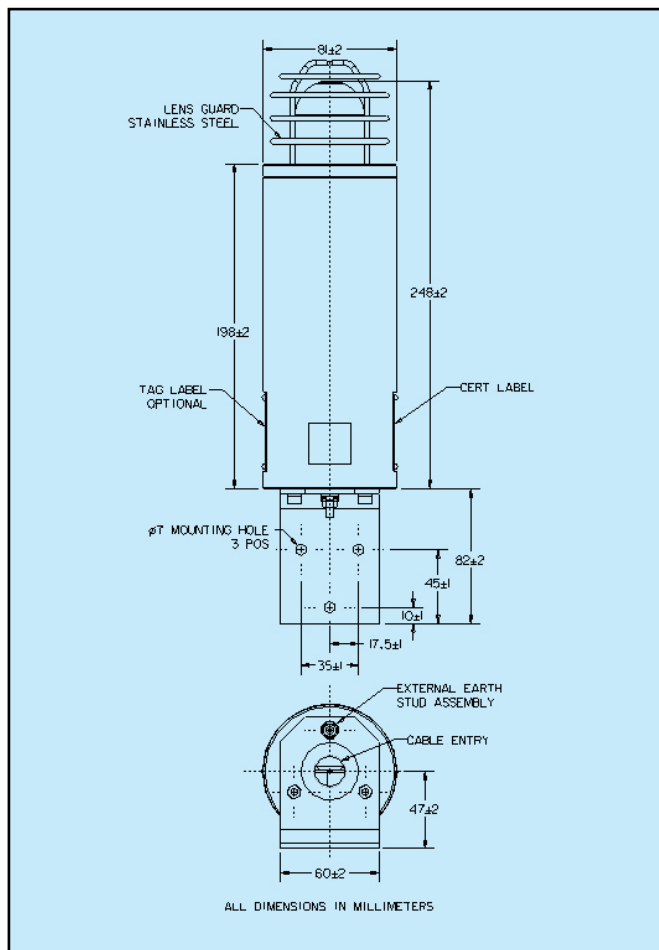
Fire Retardancy: GRP is fire retardant to ISO 1210.

Terminals: 3 x 2.5mm<sup>2</sup>.

Mounting: Wall mounted via bracket.

Entries: 1 x M20 or PG 13.5.

Optional: 1 x 3m cable tail and gland.



## Ordering Requirements

The following code is designed to help in the selection of the correct unit. Build up the reference number by inserting the code for each component into the appropriate box. **Standard products available ex-stock as follows:**

Product	Description
<b>XB9D02406RYNCBN</b>	ATEX approved Ex II 2G, certified EExd IIC T6, 24v d.c., 60 flashes/min, red lens, lens guard, M20 entry + gland + 3m cable, natural black finish.
<b>XB9D02406AYNCBN</b>	ATEX approved Ex II 2G, certified EExd IIC T6, 24v d.c., 60 flashes/min, amber lens, lens guard, M20 entry + gland + 3m cable, natural black finish.
<b>XB9D24006RYNCBN</b>	ATEX approved Ex II 2G, certified EExd IIC T6, 240v a.c., 60 flashes/min, red lens, lens guard, M20 entry + gland + 3m cable, natural black finish.

Model	Certi- fication	Voltage	Flash Rate	Lens Colour	Lens Guard	Tag Label	Entries/Cable Tail	Body Colour				
XB9					Y							
Voltage	Code	Flash Rate	Code	Colour	Code	Tag/Duty Label	Code	Entries	Code	Finish	Code	
12V d.c.	012	60/min.	06	Red	R	None	N	1 x 20mm	1B	Natural Black	N	
24V d.c.	024	Other flash rates available on request, please specify.		Blue	B	*Yes	Y	1 x PG 13.5	1P	Red	R	
48V d.c.	048			Green	G	*(Please specify)		Cable & Tail		Blue	B	
110V a.c.	110			Yellow	Y					Grey	G	
240V a.c.	240			Amber	A					White	W	
254V a.c.	254			Clear	C	Special Finish	S					
Certification	Code			Lens Guard	Code							
Uncertified	W			Yes	Y							
EExd	D											
GOST 'R'	G											
Inmetro	DM											

All the above specifications, dimensions, weights and tolerances are nominal (typical) and MEDC reserve the right to vary all data without prior notice. No liability is accepted for any consequence of use.

# MEDC

# 10 & 15 JOULE XENON BEACONS EExd(e), Weatherproof XB10 Range



## Introduction

These compact and lightweight 10 & 15 Joule beacons have been designed for use in potentially explosive atmospheres and harsh environmental conditions. The beacon housing, including the flamepaths, is manufactured completely from a UV stable glass reinforced polyester which is ideally suited for use offshore and onshore.

Stainless Steel screws and mounting bracket are incorporated ensuring a totally corrosion free unit. An additional body clamp is available for high-vibration environments.

Units can be painted to customer specification and supplied with identification labels.

- ★ Zone 1 and Zone 2 use.
- ★ EExd(e) IIB T4.
- ★ ATEX Approved, Ex II 2G.
- ★ BASEEFA Certified.
- ★ GOST 'R' Certified.
- ★ Brazilian (Inmetro) Certified.
- ★ IP66 and IP67.
- ★ Certified Temperature\* -55°C to +55°C.
- ★ Low current 10 Joule version available.
- ★ Corrosion Free GRP.
- ★ Various lens colours.
- ★ Lens guard fitted as standard.
- ★ Stainless steel mounting bracket & screws.
- ★ Replaceable twin tubes.
- ★ Optional telephone initiate.
- ★ Optional earth continuity.

\* Model dependent.

MEDC Ltd, Colliery Road,  
Pinxton, Nottingham NG16 6JF, UK.  
Tel: +44 (0)1773 864100  
Fax: +44 (0)1773 582800

MEDC International, 5829 West Sam Houston Parkway,  
North, Suite 1005, Houston, Texas 77041, USA.  
Tel: +1 (713) 937 9772  
Fax: +1 (713) 937 9773

MEDC Norway, Auglaendsmyraa 6,  
4016, Stavanger, Norge.  
Tel: +47 913 92 289  
Fax: +47 914 46 030

Sales Enq. Fax: +44 (0)1773 582830 Sales Orders Fax: +44 (0)1773 582832  
E-Mail: sales@medc.com Web: www.medc.com



# Specification

**Certification:** CENELEC EN50014, EN50018, EN50019.  
 Cert. No. BAS00ATEX2226X EExde IIB T4.  
 Cert. No. BAS00ATEX2204X EExd IIB T4.  
 Zone 1 and Zone 2.  
**GOST 'R' Certification** – 1Exd IIB T4 / 2Exde IIB T4, Russian Fire Alarm Approved (VNIPO)  
 Brazilian (Inmetro) Certified: BR-Ex d IIB T4  
 BR-Ex de IIB T4

**Materials:** Body & Cover - Glass Reinforced Polyester (GRP).  
 Lens - Glass.  
 Screws & Bracket - Stainless Steel 316

**Finish:** Natural or painted to customer requirements.

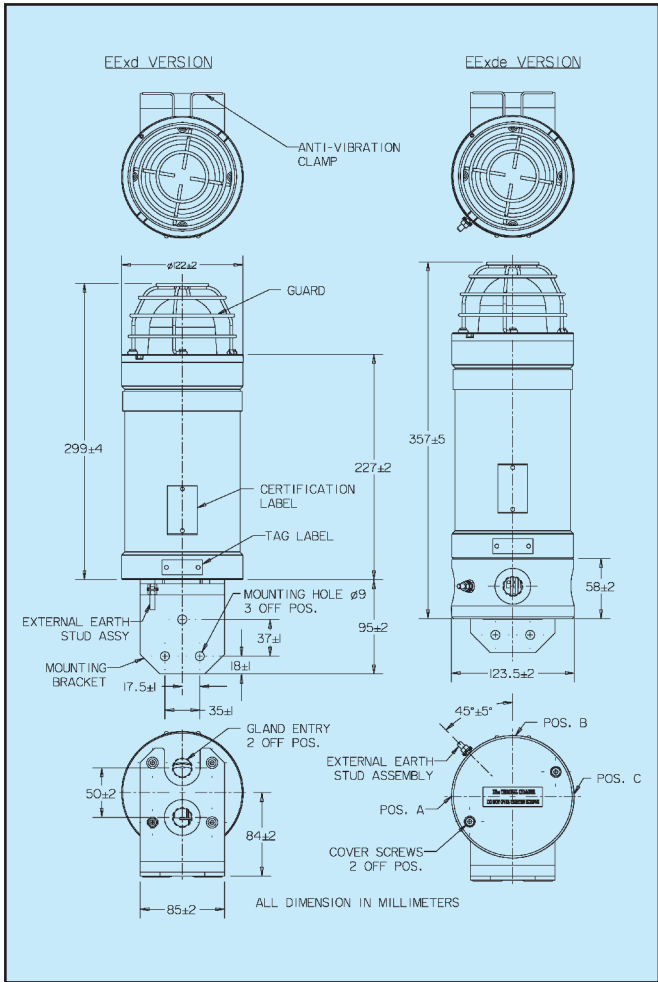
Voltage	DC				AC			
	24	48	110	220/240/254	24	48	110	220/240/254
Tube Energy (J)	10	15	10	15	10	15	10	15
Peak Current Consumption (mA)	700	1200	300	560	190	300	100	145
Effective Intensity (Cd)	285	330	285	330	285	330	285	330
Peak Intensity (Cd)	74179	111269	74179	111269	74179	111269	74179	111269
Power Consumption (W)	16.8	28.8	14.4	26.8	20.9	33	24	34.8
Flash Rate	1Hz (other flash rates available on request, please specify)							

Note: The above figures (Cd) are for a clear lens @ 1Hz flash rate.

### For Coloured Lenses:

Colour	Red	Blue	Amber	Green	Yellow
Multiplying Factors (Approximate)	0.15	0.12	0.51	0.49	0.86

**Weight:** EExd 2.8kg. EExde 3.6kg.  
**Certified Temperature:** 15J unit: EExd -55°C to +40°C.  
 EExde -50°C to +40°C.  
 10J unit: EExd -55°C to +55°C.  
 EExde -50°C to +45°C.  
**Ingress Protection:** IP66 & IP67.  
**Fire Retardancy:** GRP is fire retardant to ISO 1210.  
**Terminals:** 4 x 2.5mm<sup>2</sup> (d.c.), 6 x 2.5mm<sup>2</sup> (a.c.).  
**Mounting:** Wall mounted via bracket.  
**Entries:** Up to 2 x M20 (EExd). Up to 3 x M20 (EExde).  
 Optional: 1 x 3m cable tail (both EExd & EExde).



# Ordering Requirements

The following code is designed to help in the selection of the correct unit. Build up the reference number by inserting the code for each component into the appropriate box. **Standard products available ex-stock as follows:**

PRODUCT	DESCRIPTION
<b>XB10D024FRNN2BN</b>	ATEX approved Ex II 2G, certified EExdIIB T4, 15 Joule Xenon, 24V d.c., 60 flashes/min., red lens, lens guard, 2 x M20 entries, natural black finish.
<b>XB10D024FANN2BN</b>	ATEX approved Ex II 2G, certified EExdIIB T4, 15 Joule Xenon, 24V d.c., 60 flashes/min., amber lens, lens guard, 2 x M20 entries, natural black finish.
<b>XB10D240FRNN2BN</b>	ATEX approved Ex II 2G, certified EExdIIB T4, 15 Joule Xenon, 240V a.c., 60 flashes/min., red lens, lens guard, 2 x M20 entries, natural black finish.
<b>XB10D240FANN2BN</b>	ATEX approved Ex II 2G, certified EExdIIB T4, 15 Joule Xenon, 240V a.c., 60 flashes/min., amber lens, lens guard, 2 x M20 entries, natural black finish.

Model	Certification	Voltage	Power	Lens Colour	Labels	Options	Entries	Body Colour
XB10								

Certification	Code	Voltage	Code	Colour	Code	Tag/Duty Label	Code	Entries	Code	Finish	Code
Uncertified	W	24V d.c.	024	Red	R	None	N	EExd		Natural Black	N
EExd	D	48V d.c.	048	Blue	B	*Yes	Y	1 x M20	1B	Red	R
EExde	E	110V a.c.	110	Green	G	*(Please specify)		1 x PG13.5	1P	Blue	B
GOST 'R' Exd	DG*	220V a.c.	220	Yellow	Y			2 x M20	2B	Yellow	Y
GOST 'R' Exe	EG*	240V a.c.	240	Amber	A			2 x PG13.5	2P	Grey	G
Inmetro EExd	DM	254V a.c.	254	Clear	C			EExd(e)		White	W
Inmetro EExde	EM							3 x M20	3B	Special Finish	S

Power	Code	Option	Code
10J	T	Telephone Initiate	T
15J	F	Earth Continuity	E
		3m cable tail	G
		None	N

\*VNIPO Approved as standard.



All the above specifications, dimensions, weights and tolerances are nominal (typical) and MEDC reserve the right to vary all data without prior notice. No liability is accepted for any consequence of use.



# 5 JOULE XENON BEACONS EExd, Weatherproof XB11 Range



Beacon/Sounder  
Combination Unit



**Now GOST  
'R' & 'K'  
Certified**

## Introduction

These certified beacons have been designed for use in potentially explosive gas and dust atmospheres and harsh environmental conditions. The glass reinforced polyester enclosures are suitable for use offshore or onshore, where light weight combined with corrosion resistance is required.

The beacon housing is manufactured completely from a U.V. stable, glass reinforced polyester. Stainless steel screws and mounting bracket are incorporated ensuring a totally corrosion free product.

Units can be painted to customer specification and supplied with identification labels.

- ★ Zone 1 and Zone 2 use.
- ★ EExd IIB T4, T5 & T6.
- ★ ATEX approved, Ex II 2GD.
- ★ BASEEFA certified.
- ★ UL Listed for USA and Canada
  - Hazardous locations:
    - Class I, Div 2, Groups C & D.
    - Class I, Zones 1 & 2, AExd IIB T4/T5.
  - Ordinary locations: Visual-Signal Device.
- ★ GOST 'R' & 'K' Certified.
- ★ Australian (SAA) certified.
- ★ Chinese (CQST) certified.
- ★ Brazilian (Inmetro) certified.
- ★ IP66 and IP67.
- ★ Certified temperature  $-55^{\circ}\text{C}$  to  $+70^{\circ}\text{C}$ .
- ★ Corrosion resistant GRP.
- ★ Optional stainless steel backstrap.
- ★ Various lens colours.
- ★ Optional lens guard.
- ★ Optional telephone initiation.
- ★ 2 x M20 cable entries or 2 x  $1/2$ " NPT\*.
- ★ Earth continuity option (model dependent).
- ★ Filament version (20W) available†.
- ★ Fluorescent version (10W) available†.
- ★ Beacon/Sounder Combination Unit available.

\*Model dependent.

†See FL11, FB11, FL12, FB12 data sheet.

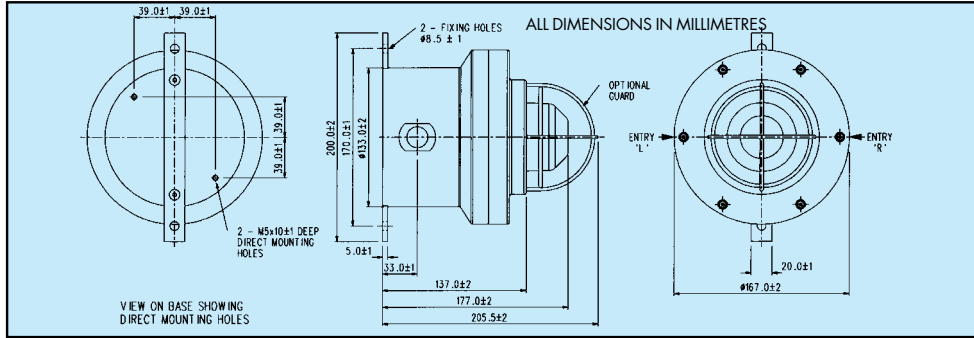
MEDC Ltd, Colliery Road,  
Pinxton, Nottingham NG16 6JF, UK.  
Tel: +44 (0)1773 864100  
Fax: +44 (0)1773 582800

MEDC International, 5829 West Sam Houston Parkway,  
North, Suite 1005, Houston, Texas 77041, USA.  
Tel: +1 (713) 937 9772  
Fax: +1 (713) 937 9773

MEDC Norway, Auglaend Smyraa 6,  
4016, Stavanger, Norge.  
Tel: +47 913 92 289  
Fax: +47 914 46 030

Sales Enq. Fax: +44 (0)1773 582830 Sales Orders Fax: +44 (0)1773 582832  
E-Mail: sales@medc.com Web: www.medc.com





## Specification

Certification: CENELEC EN50014 and EN50018.  
 Cert. No. BAS99 ATEX 2195X.  
 EExd IIB 135°C (-55 t.amb +70°C) T4.  
 100°C (-55 t.amb +55°C) T5.  
 85°C (-55 t.amb +40°C) T6.

### UL Listed for USA and Canada to:

– Hazardous locations:  
 Class I, Div 2 Groups C & D.  
 Class I, Zones 1 & 2 AExd IIB T4/T5.  
 UL Listing No: E187894.  
 – Ordinary locations: Visual-Signal Device.  
 UL listing No. S8128.

Refer to UL Datasheet at rear of catalogue for complete information.

**GOST 'R' Certification:** 1Exd IIB T4/T5/T6.

**GOST 'K' Certification:** Exd IIB T4/T5/T6.

**Chinese (CSQT) Certification:** Exd IIB T5/T6.

**Brazilian (Inmetro) Certification:** BR-Ex d IIB T4/T5/T6.

Material: Body: – Glass reinforced polyester (GRP).  
 Lens: – Glass.  
 Cover Screws + Backstrap: – Stainless steel 316.

Finish: Natural black or painted to customer specification.

	DC	AC50/60 Hz	
Voltage	24	110	240
XB11 Tube Energy (Joules)	5	5	5
Peak Current Consumption (mA)	320	100	60
Effective Intensity (Cd)	29	29	29
Peak Intensity (Cd)	22213	22213	22213
Power Consumption (Watts)	8	11	14.4

NOTE: The Cd figures are for a clear lens @ 1Hz flash rate.

### FOR COLOURED LENSES

Colour	Red	Blue	Amber	Green	Yellow
Multiplying Factor	0.15	0.12	0.51	0.49	0.86

The photometric data has been verified by BSI.

A report is available if required.

Weight: 2.5Kg.

Certified Temperature: EExd –55°C to +70°C (T4).  
 –55°C to +55°C (T5).  
 –55°C to +40°C (T6).  
 UL –55°C to +70°C (hazardous locations).  
 –55°C to +55°C (ordinary locations).

Ingress Protection: IP66 & IP67.

Fire Retardancy: GRP is fire retardant to ISO 1210.

Earth Continuity: Optional for metal glands provided via a brass plate. (Not available for UL version).

Terminals: 6 x 2.5mm<sup>2</sup>.

Telephone initiation: Initiation by telephone ringing tone.

Labels: Duty/Tag Label optional.

Entries: 2 x 20mm ISO EExd.  
 2 x ½" NPT UL.  
 Note: ATEX/UL Dual Listed unit has up to 2 x ½" NPT entries only.

Beacon/Sounder Unit: The beacon may be combined with a MEDC sounder to create a visual/audible alarm.  
 Contact MEDC for price and specification.

## Ordering Requirements

The following code is designed to help in the selection of the correct unit. Build up the reference number by inserting the code for each component into the appropriate box. **For standard products, available ex-stock, contact sales office for details.**

Certification	Voltage	Flash Rate	Lens Colour	Lens Guard	Unit Fixing	Earth Continuity	Tag/Duty Label	Options	Unit Finish
<b>XB11</b> <input type="text"/>	<input type="text"/>	<input type="text"/>	<input type="text"/>	<input type="text"/>	<input type="text"/>	<input type="text"/>	<input type="text"/>	<input type="text"/>	<input type="text"/>
<b>Certification Code</b>	<b>Code</b>	<b>Colour Code</b>	<b>Guard Code</b>	<b>Label Code</b>	<b>Option Code</b>	<b>Unit Fixing Code</b>	<b>Continuity* Code</b>	<b>Finish Code</b>	
Uncertified	W	Red	R	None	N	None	N	Natural Black	N
BASEEFA	B	Blue	B	Yes	Y	Yes	Y	Red	R
UL	UL	Green	G					Blue	B
UL (Ordinary location)	UW	Amber	A					Yellow	Y
ATEX/UL Dual Listed	AU	Yellow	Y					Grey	G
GOST 'R'	G	Clear	C					White	W
GOST 'K'	K							Special Finish	S
Chinese (CQST)	Q								
Inmetro	DM								
<b>Voltage Code</b>	<b>Code</b>	<b>Flash Rate Code</b>	<b>Code</b>						
24V d.c.	024	60/min	06						
48V d.c.	048	Other flash rates available, please specify.							
110V a.c.	110								
230V a.c.	230								
240V a.c.	240								
Other voltages available, please specify.									

\*Telephone option not available in UL version.  
 \*Earth continuity not available in UL or Dual Listed versions.



All the above specifications, dimensions, weights and tolerances are nominal (typical) and MEDC reserve the right to vary all data without prior notice. No liability is accepted for any consequence of use.

# 21 JOULE XENON BEACONS

## EExd, Weatherproof

### XB12 Range



## Introduction

These high output certified beacons have been designed for use in potentially explosive atmospheres and harsh environmental conditions. The enclosures are suitable for use offshore or onshore, where light weight combined with corrosion resistance is required.

The beacon housing is manufactured completely from a U.V. stable, glass reinforced polyester. Stainless steel screws and mounting bracket are incorporated ensuring a totally corrosion free product.

Units can be painted to customer specification and supplied with identification labels.

- ★ Zone 1 and Zone 2 use.
- ★ EExd, IIB T4 & T5.
- ★ ATEX approved, Ex II 2G.
- ★ BASEEFA Certified.
- ★ UL Listed for USA and Canada
  - Hazardous locations:
    - Class I, Div 2, Groups C & D.
    - Class I, Zones 1 & 2, AExd IIB T4 & T5.
  - Ordinary locations: Visual-Signal Device.
  - Marine Listed
- ★ GOST 'R' & 'K' Certified.
- ★ Chinese (CQST) Certified.
- ★ Inmetro Certified.
- ★ High Output (21 Joules).
- ★ IP66 and IP67.
- ★ Certified temperature  $-55^{\circ}\text{C}$  to  $+70^{\circ}\text{C}$ .
- ★ Corrosion resistant GRP.
- ★ Optional stainless steel backstrap.
- ★ Various lens colours.
- ★ Optional lens guard.
- ★ Optional telephone initiation.
- ★ Twin replaceable tubes.

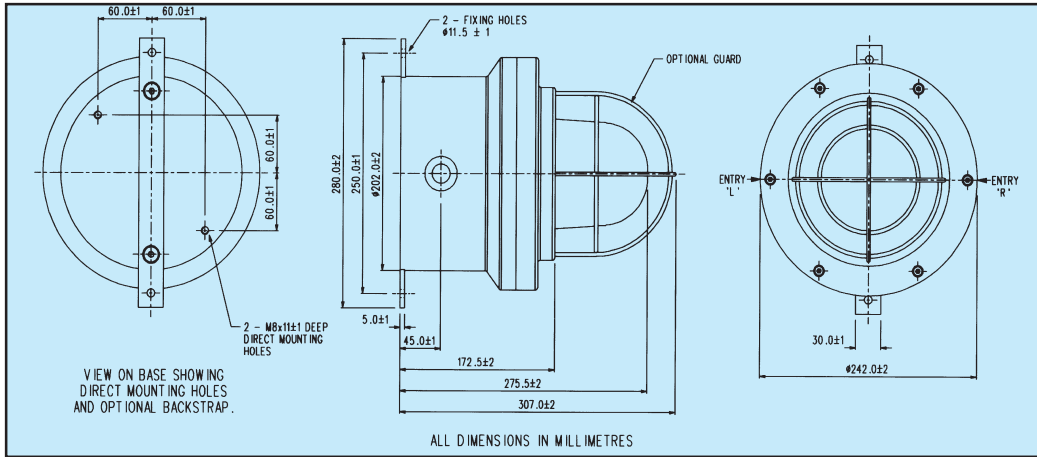
MEDC Ltd, Colliery Road,  
Pinxton, Nottingham NG16 6JF, UK.  
Tel: +44 (0)1773 864100  
Fax: +44 (0)1773 582800

MEDC International, 5829 West Sam Houston Parkway,  
North, Suite 1005, Houston, Texas 77041, USA.  
Tel: +1 (713) 937 9772  
Fax: +1 (713) 937 9773

MEDC Norway, Auglaendsmyrå 6,  
4016, Stavanger, Norge.  
Tel: +47 913 92 289  
Fax: +47 914 46 030

Sales Enq. Fax: +44 (0)1773 582830 Sales Orders Fax: +44 (0)1773 582832  
E-Mail: sales@medc.com Web: www.medc.com





## Specification

Certification: CENELEC EN50014 and EN50018.  
 Cert. No. BAS 99 ATEX 2196. EExd IIB T4 & T5.  
**UL Listed for USA and Canada:**  
 - Hazardous locations:  
 Class I, Div 2, Groups C & D and  
 Class I, Zones 1 & 2, AExd IIB T4 & T5.  
 UL Listing No: E187894.  
 - Ordinary locations: Visual-Signal Device.  
 - Marine Listed  
 UL Listing No. S8128.  
**GOST 'R' Certification:** 1Exd IIB T4/T5.  
**GOST 'K' Certification:** Exd IIB T4/T5.  
**Chinese (CQST) Certification:** Exd IIB T4/T5.  
**Inmetro Certification:** BR-Ex d IIB T3/T4/T5/T6.

Material: Body: - Glass reinforced polyester (GRP).  
 Lens: - Glass  
 Cover Screws + Backstrap: - Stainless steel 316.  
 Finish: Natural black or painted to customer specification.  
 Weight: 7.0Kg.  
 Certified Temperature: EExd -55°C to +70°C (T4). -55°C to +40°C (T5).  
 UL -55°C to +70°C (Hazardous Locations).  
 -55°C to +55°C (Ordinary Locations).

Ingress Protection: IP66 & IP67.  
 Fire Retardancy: GRP is fire retardant to ISO 1210.  
 Earth Continuity: Optional for metal glands provided via a brass plate (not available in UL version).  
 Terminals: 6 x 6.0mm<sup>2</sup>.

Telephone initiation: Initiation by telephone ringing tone.  
 Labels: Duty/Tag Label optional.  
 Entries: 2 x 20mm ISO EExd.  
 2 x 1/2" NPT UL.

	DC	AC50/60 Hz	
Voltage	24	110	240
XB12 Tube Energy (Joules)	21	21	21
Peak Current Consumption (mA)	1400	350	185
Effective Intensity (Cd)	355	355	355
Peak Intensity (Cd)	123691	123691	123691
Power Consumption (Watts)	33.6	38.5	44.4

NOTE: The Cd figures are for a clear lens @ 1Hz flash rate.

### For Coloured Lenses

Colour	Red	Blue	Amber	Green	Yellow
Multiplying Factor	0.15	0.12	0.51	0.49	0.86

The photometric data has been verified by BSI. A report is available if required.

## Ordering Requirements

The following code is designed to help in the selection of the correct unit. Build up the reference number by inserting the code for each component into the appropriate box. **For standard products, available ex-stock, contact sales office for details.**

Certification Voltage Flash Rate Lens Colour Lens Guard Unit Fixing Earth Continuity Tag/Duty Label Options Unit Finish

**XB12**

Certification	Code
Uncertified	W
ATEX	B
UL	UL
UL (ordinary locations)	UW
UL Marine	UM
GOST 'R'	G
GOST 'K'	K
Chinese (CQST)	Q
Inmetro	DM

Guard	Code
None	N
Yes	Y

Label	Code
None	N
Yes	Y
(Please specify)	

Options	Code
*Telephone	T
Blanking Plug	P
None	N

\*Telephone option not available in UL version.

Colour	Code
Red	R
Blue	B
Green	G
Amber	A
Yellow	Y
Clear	C

Unit Fixing	Code
Direct Mounting	D
Backstrap	B

Continuity*	Code
None	N
Yes	Y

\*Earth continuity not available in UL version.

Finish	Code
Natural Black	N
Red	R
Blue	B
Yellow	Y
Grey	G
White	W
Special Finish	S

Voltage	Code
24V d.c.	024
110V a.c.	110
240V a.c.	240
Other voltages available, please specify.	

Flash Rate	Code
60/min	06
Other flash rates available, please specify.	



All the above specifications, dimensions, weights and tolerances are nominal (typical) and MEDC reserve the right to vary all data without prior notice. No liability is accepted for any consequence of use.

# 10 JOULE XENON BEACONS for Harsh Industrial & Marine Environments XB13 Range

**IP66/67  
Weatherproof**  
**Corrosion Free  
GRP/Polycarbonate**



## Introduction

This range of ruggedised, weatherproof beacons, has been designed with high ingress protection to cope with harsh environmental conditions.

**MEDC can also provide a range of beacons suitable for use in potentially explosive atmospheres.**

**For more information, refer to the catalogue or contact MEDC.**

- ★ Weatherproof.
- ★ IP66 & IP67.
- ★ Operating temperature  $-55^{\circ}\text{C}$  to  $+70^{\circ}\text{C}$ .
- ★ Corrosion resistant red painted GRP body.
- ★ High intensity flash.
- ★ Polycarbonate lens, various colours available.
- ★ Retained stainless steel cover screws.
- ★ Optional lens guard.
- ★ Optional telephone or relay initiate.
- ★ 3 x M20 cable entries.
- ★ Replaceable tube.
- ★ Switchable dual flash.

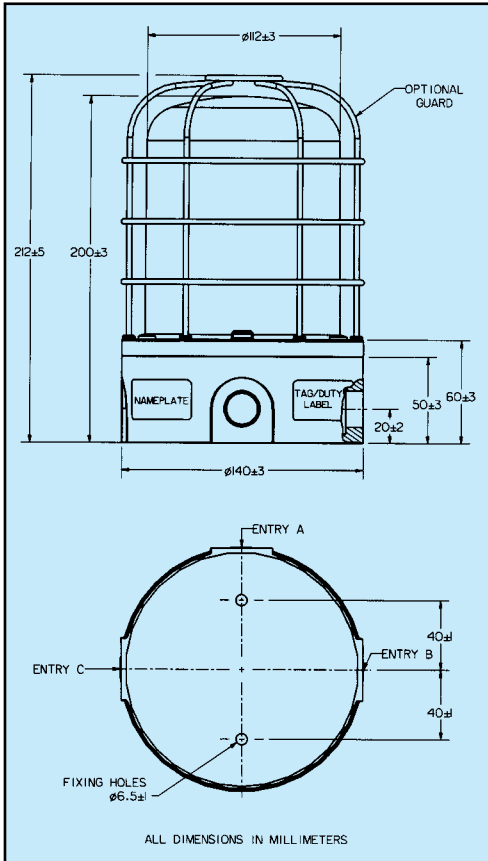
MEDC Ltd, Colliery Road,  
Pinxton, Nottingham NG16 6JF, UK.  
Tel: +44 (0)1773 864100  
Fax: +44 (0)1773 582800

MEDC International, 5829 West Sam Houston Parkway,  
North, Suite 1005, Houston, Texas 77041, USA.  
Tel: +1 (713) 937 9772  
Fax: +1 (713) 937 9773

MEDC Norway, Auglaendemyraa 6,  
4016, Stavanger, Norge.  
Tel: +47 913 92 289  
Fax: +47 914 46 030

Sales Enq. Fax: +44 (0)1773 582830 Sales Orders Fax: +44 (0)1773 582832  
E-Mail: [sales@medc.com](mailto:sales@medc.com) Web: [www.medc.com](http://www.medc.com)





## Specification

Material:	UV stable glass reinforced polyester body. UV stable polycarbonate cover/lens. Retained stainless steel cover screws.
Finish:	Painted red as standard or to Customer's specification.
Tube Energy:	10 Joules (second flash 7.5 Joules).
Weight:	1.1kg,
Operating Temperature:	-55°C to +70°C.
Ingress Protection:	IP66 & IP67.
Tube Life:	> 1 x 10 <sup>6</sup> flashes.
Voltage:	12V d.c., 24V d.c., 115V a.c., 230V a.c.

Current Consumption:	Voltage	Current Consumption
	12V d.c.	1.4A
	24V d.c.	650mA
	115V a.c.	180mA
	230V a.v.	100mA

Tube Type:	Xenon discharge.
Lens Colour:	Various colours available.
Terminals:	8 x 2.5mm <sup>2</sup> .
Flash Rate:	1 flash per second.
Dual Flash Rate:	Time between dual flashes = 0.5 seconds. Charging time = 1 second. Cycle repeats every 1.5 seconds.
Labels:	Duty and tag labels available.
Cable Entries:	Up to 3 x M20 via knockouts.
Intensity:	Effective intensity 220 Cd. Peak intensity 75,000 Cd. (Figures are for clear lens at 1Hz flash rate).

### FOR COLOURED LENSES

Colour	Red	Blue	Amber	Green	Yellow
Multiplying Factor	0.15	0.12	0.51	0.49	0.86

## Ordering Requirements

The following code is designed to help in the selection of the correct unit. Build up the reference number by inserting the code for each component into the appropriate box. **Standard products available ex-stock as follows:**

Product	Description
<b>XB13024RNNR</b>	Weatherproof, 10J, 24V d.c., red lens, painted red body.
<b>XB13024ANNR</b>	Weatherproof, 10J, 24V d.c., amber lens, painted red body.
<b>XB13230RNNR</b>	Weatherproof, 10J, 230V a.c., red lens, painted red body.
<b>XB13230ANNR</b>	Weatherproof, 10J, 230V a.c., amber lens, painted red body.

Unit Type	Voltage	Lens Colour	Lens Guard	Options	Unit Finish																																																
XB13																																																					
	<table border="1"> <thead> <tr> <th>Voltage</th> <th>Code</th> </tr> </thead> <tbody> <tr> <td>12V d.c.</td> <td>012</td> </tr> <tr> <td>24V d.c.</td> <td>024</td> </tr> <tr> <td>115V a.c.</td> <td>115</td> </tr> <tr> <td>230V a.c.</td> <td>230</td> </tr> </tbody> </table>	Voltage	Code	12V d.c.	012	24V d.c.	024	115V a.c.	115	230V a.c.	230	<table border="1"> <thead> <tr> <th>Colour</th> <th>Code</th> </tr> </thead> <tbody> <tr> <td>Red</td> <td>R</td> </tr> <tr> <td>Blue</td> <td>B</td> </tr> <tr> <td>Green</td> <td>G</td> </tr> <tr> <td>Yellow</td> <td>Y</td> </tr> <tr> <td>Amber</td> <td>A</td> </tr> <tr> <td>Clear</td> <td>C</td> </tr> </tbody> </table>	Colour	Code	Red	R	Blue	B	Green	G	Yellow	Y	Amber	A	Clear	C	<table border="1"> <thead> <tr> <th>Guard</th> <th>Code</th> </tr> </thead> <tbody> <tr> <td>Yes</td> <td>Y</td> </tr> <tr> <td>None</td> <td>N</td> </tr> </tbody> </table>	Guard	Code	Yes	Y	None	N	<table border="1"> <thead> <tr> <th>Option</th> <th>Code</th> </tr> </thead> <tbody> <tr> <td>Duty</td> <td>D*</td> </tr> <tr> <td>Tag</td> <td>T*</td> </tr> <tr> <td>Telephone Initiate</td> <td>I</td> </tr> <tr> <td>Relay Initiate</td> <td>R</td> </tr> <tr> <td>None</td> <td>N</td> </tr> </tbody> </table> <p>*Please specify wording</p>	Option	Code	Duty	D*	Tag	T*	Telephone Initiate	I	Relay Initiate	R	None	N	<table border="1"> <thead> <tr> <th>Colour</th> <th>Code</th> </tr> </thead> <tbody> <tr> <td>Painted Red</td> <td>R</td> </tr> <tr> <td>Special</td> <td>S*</td> </tr> </tbody> </table> <p>*Please specify</p>	Colour	Code	Painted Red	R	Special	S*
Voltage	Code																																																				
12V d.c.	012																																																				
24V d.c.	024																																																				
115V a.c.	115																																																				
230V a.c.	230																																																				
Colour	Code																																																				
Red	R																																																				
Blue	B																																																				
Green	G																																																				
Yellow	Y																																																				
Amber	A																																																				
Clear	C																																																				
Guard	Code																																																				
Yes	Y																																																				
None	N																																																				
Option	Code																																																				
Duty	D*																																																				
Tag	T*																																																				
Telephone Initiate	I																																																				
Relay Initiate	R																																																				
None	N																																																				
Colour	Code																																																				
Painted Red	R																																																				
Special	S*																																																				



All the above specifications, dimensions, weights and tolerances are nominal (typical) and MEDC reserve the right to vary all data without prior notice. No liability is accepted for any consequence of use.

# 15 JOULE XENON BEACONS

## EExd, Weatherproof

### XB15 Range



XB15  
Pipe Mount  
Note: UL only  
(with cast guard)

XB15 Direct Mount (with backstrap and wire guard)

## Introduction

These certified beacons have been designed for use in potentially explosive atmospheres and harsh environmental conditions. The enclosures are suitable for use offshore or onshore, where light weight combined with corrosion resistance is required.

The housings are manufactured completely from a U.V. stable, glass reinforced polyester. Stainless steel screws and mounting bracket are available ensuring a totally corrosion-free product.

The model XB15 contains a supervisory diode and four wire lead connections for alarm applications.

Units can be painted to customer specification and supplied with identification labels.

- ★ Zone 1 and Zone 2 use.
- ★ EExd IIC, T4/T5/T6.
- ★ ATEX approved, Ex II 2GD.
- ★ UL listed for USA and Canada
  - Hazardous locations:
    - Class I, Div. 2, Groups A, B, C & D.
    - Class II, Div 2 Groups F & G
    - Class I, Zone 1, AExd IIC T4/T5/T6.
  - Ordinary locations: Visual-Signal Device.
  - Marine listed.
- ★ GOST 'R' & 'K' Certified.
- ★ Brazilian (Inmetro) Certified.
- ★ IEC-Ex Approved.
- ★ IP66 & 67.
- ★ Certified temperature -55°C to +70°C.
- ★ Pipe mount or direct mount enclosure.
- ★ Corrosion-free GRP.
- ★ Four wires and supervisory diode.
- ★ Optional stainless steel backstrap.
- ★ Various lens colours.
- ★ Optional relay or telephone initiate.
- ★ Optional cast or wire lens guard.
- ★ Up to 3 x M20 or 3 x M25 entries.
- ★ Filament version available (100W max).  
See data sheet for FB15.

MEDC Ltd, Colliery Road,  
Pinxton, Nottingham NG16 6JF, UK.  
Tel: +44 (0)1773 864100  
Fax: +44 (0)1773 582800

MEDC International, 5829 West Sam Houston Parkway,  
North, Suite 1005, Houston, Texas 77041, USA.  
Tel: +1 (713) 937 9772  
Fax: +1 (713) 937 9773

MEDC Norway, Auglaendsmyrå 6,  
4016, Stavanger, Norge.  
Tel: +47 913 92 289  
Fax: +47 914 46 030

Sales Enq. Fax: +44 (0)1773 582830 Sales Orders Fax: +44 (0)1773 582832  
E-Mail: sales@medc.com Web: www.medc.com



# Specification

Certification: CENELEC EN50014 & EN50018.

ATEX Cert. No. Baseefa 04ATEX0009X. BASEEFA EExd IIC T4/T5.

UL Listed for USA and Canada:

– Hazardous locations

Class I, Div 2, Groups A, B, C & D.

Class II, Div 2 Groups F & G

Class 1, Zone 1, AExd IIC T4/T5/T6.

UL listing No. E187894.

– Ordinary locations: Visual Signal Device.

– Marine Listed

UL listing No. S8128

GOST 'R' Certification: 1 Exd IIC T4/T5

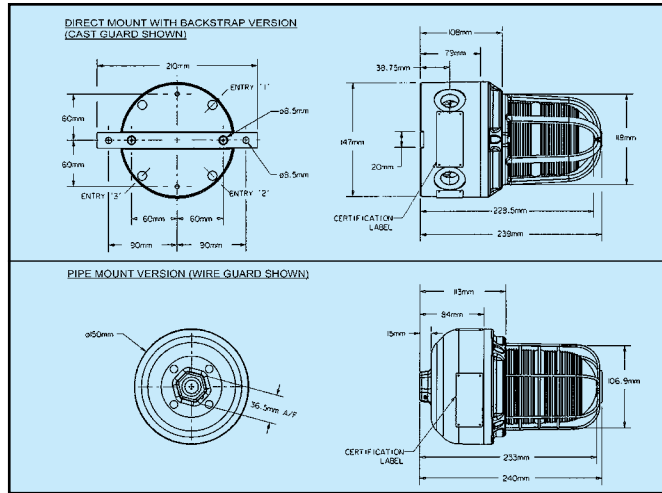
Russian Fire alarm (VNIIP0) approved

GOST 'K' Certification: Exd IIC T4/T5

Brazilian (Inmetro) Certified: BR-Ex d IIC T3/T4/T5/T6

IEC-ex Approved

Material:	Body: Glass reinforced polyester. Lens: Glass. Backstrap: stainless steel 316. Wire Guard (optional): Stainless steel wire. Cast Guard (optional): Aluminium LM25M.
Finish:	Natural black or epoxy painted to customer specification.
Models:	XB15 ATEX – Available in direct mount version only. XB15 UL – Available in pipe and direct mount versions.
Voltage:	24, 48V d.c. 110, 120, 230, 240, 254V a.c.
Tube Energy:	15 Joules.
Tube Life:	>1 x 10 <sup>6</sup> flashes.
Flash Rate:	60, 80, 120 fpm.
Certified Temperature:	-55°C to +40°C (T6). -55°C to +55°C (T5). -55°C to +70°C (T4).
Weight:	Pipe mount: 2.6kg; Direct mount: 3.0kg.
Ingress Protection:	IP66 & IP67.
Entries:	ATEX version: Supplied as 2 x M20 entries as standard – Up to 3 x M20 or 3 x M25 entries. Contact sales office to order. UL version: Supplied as 2 x ¾" NPT (direct mount) or ¾" (pipe mount) as standard. Other options available: Up to 3 x ½" NPT or 3 x ¾" NPT (direct mount); ½" NPT (pipe mount) – contact sales office to order.
Terminals:	Direct mount: 12 x 2.5mm <sup>2</sup> . Pipe mount: 8 x 2.5mm <sup>2</sup> .



Relay Initiate: Available on all versions - operates with 24V d.c. initiate supplies only.

Labels: Tag/Duty label option.

Electrical Ratings:

Voltage	d.c.		a.c.				
	24	48	110	120	230	240	254
Current (A)	0.78	0.67	0.4	0.4	0.2	0.2	0.17
Effective Candlepower (Cd)	– 330 at 60 flashes per min.						
Peak Candlepower	– 520,000 (Peak candlepower is the maximum light intensity generated by a flashing light during its light pulse)						

Multiplying Factor for Coloured Lenses:

Red	Blue	Amber	Green	Yellow
0.15	0.12	0.51	0.49	0.86

## Ordering Requirements

The following code is designed to help in the selection of the correct unit. Build up the reference number by inserting the code for each component into the appropriate box. **Standard products available for immediate shipping – contact sales office for details.**

Model	Certification	Voltage	Flashrate	Lens Color	Unit Guard	Fixing	Options	Finish
<b>XB15</b>	<input type="text"/>	<input type="text"/>	<input type="text"/>	<input type="text"/>	<input type="text"/>	<input type="text"/>	<input type="text"/>	<input type="text"/>

Certification	Code	Voltage	Code	Fpm	Code	Guard	Code	Option	Code
ATEX	B	24V d.c.	024	60	06	None	N	None	N
UL	UL	48V d.c.	048	80	08	Cast	C	Tag label	T
UL (ordinary location)	UW	110V a.c.	110	120	12	Wire	W	Duty label	D
UL Marine	U	120V a.c.	120					Relay initiate*	R
GOST 'R'*	G	230V a.c.	230					Telephone initiate†	I
GOST 'K'	K	240V a.c.	240					Blanking Plug	P
Inmetro	DM	254Va.c.	254						
IEC Ex	J								

Color	Code	Unit Fixing	Code	Finish	Code
Red	R	Pipe mount	P*†	Natural Black	N
Blue	B	Direct mount	D†	Red	R
Green	G	Direct w/backstrap	B†	Blue	B
Amber	A			Yellow	Y
Yellow	Y			Green	G
Clear	C			White	W
				Special Finish	S

\*VNIIP0 approved as standard.

\*Only available on UL Listings.  
†Contact MEDC if ½" NPT is required.

\*Suitable for 24V d.c. supplies only.  
†Not available on UL/ UW versions.



All the above specifications, dimensions, weights and tolerances are nominal (typical) and MEDC reserve the right to vary all data without prior notice. No liability is accepted for any consequence of use.



# 10 JOULE XENON BEACONS

## UL Listed Only, Weatherproof

### XB16 Range



## Introduction

These listed beacons have been designed for use in potentially explosive atmospheres and harsh environmental conditions. The enclosures are suitable for use offshore or onshore, where light weight combined with corrosion resistance is required.

The housing is manufactured from a U.V. stable, glass reinforced polyester, with the lens manufactured from a U.V. stable polycarbonate. Stainless steel screws are used ensuring a totally corrosion-free product.

The model XB16 contains supervisory diode and four wire leads for fire alarm applications. This beacon is also available UL 1971 (ADA) listed for hearing impaired applications.

Units can be painted to customer specification and supplied with identification labels.

- ★ UL listed for USA and Canada
    - Hazardous locations for USA and Canada Class I, Div. 2, Groups A, B, C & D\*.
    - Class II, Div. 2, Groups F & G.
    - UL 1971 compliant version available†.
    - Ordinary locations: Visual Signal Device
    - 'T' Rating model dependent. Contact sales office for information.
  - ★ IP66 & 67.
  - ★ Certified temperature  $-55^{\circ}\text{C}$  to  $+70^{\circ}\text{C}$ .
  - ★ Pipe mount with  $\frac{3}{4}$ " NPT entry.
  - ★ Corrosion-free GRP enclosure.
  - ★ 580,000 peak candlepower.
  - ★ Polycarbonate lens, various colors available†
  - ★ 4 wire diode monitored board.
  - ★ Optional relay initiate.
  - ★ Optional lens guard.
- \*Conforms to UL standard or regulated voltage.  
†UL 1971 version available with clear lens only.

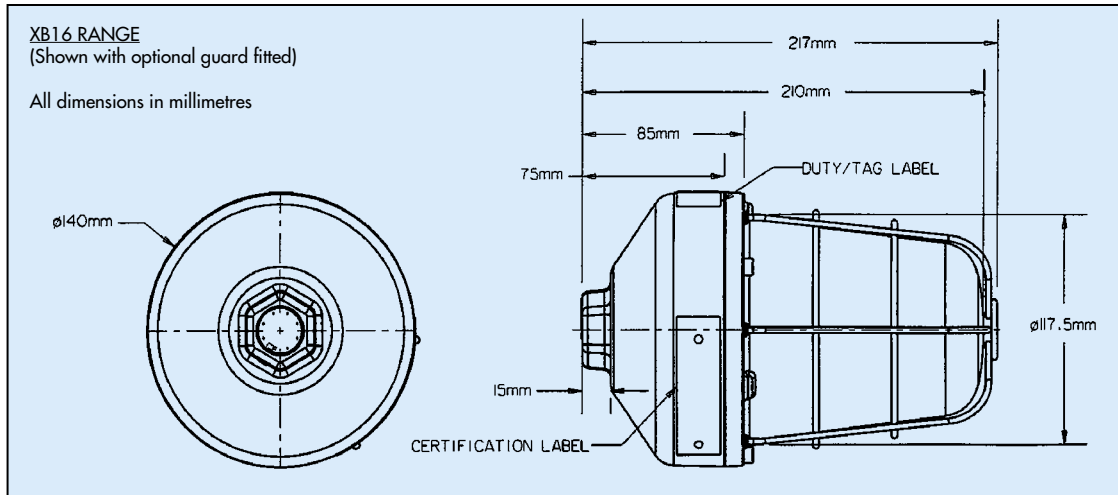
MEDC Ltd, Colliery Road,  
Pinxton, Nottingham NG16 6JF, UK.  
Tel: +44 (0)1773 864100  
Fax: +44 (0)1773 582800

MEDC International, 5829 West Sam Houston Parkway,  
North, Suite 1005, Houston, Texas 77041, USA.  
Tel: +1 (713) 937 9772  
Fax: +1 (713) 937 9773

MEDC Norway, Auglaendsmyraa 6,  
4016, Stavanger, Norge.  
Tel: +47 913 92 289  
Fax: +47 914 46 030

Sales Enq. Fax: +44 (0)1773 582830 Sales Orders Fax: +44 (0)1773 582832  
E-Mail: sales@medc.com Web: www.medc.com





## Specification

Certification:	UL Listed for USA and Canada: – Hazardous locations for USA and Canada: UL1604. Class I, Div. 2, Groups A, B, C & D. Class II, Div. 2, Groups F & G. UL listing No. E251185. – Ordinary locations: Visual Signal Device: UL1638. UL listing No. E251185. – Hazardous locations for hearing impaired: UL1971. UL listing No. E251185.
Material:	Body: Glass reinforced polyester. Lens: U.V. stable polycarbonate. Lens screws: stainless steel 316.
Finish:	Natural black or painted to customer specification.
Voltage:	24, 48V d.c. 110, 120, 230, 240, 254V a.c. Conforms to UL regulated voltage output (24Vdc, 120Vac, 240Vac).
Certified Temperature:	-55°C to +70°C
Tube Energy:	10 Joules.
Tube life:	>1 x 10 <sup>6</sup> flashes.

Weight:	1.0 Kg						
Ingress Protection:	IP66 & IP67.						
Entries:	Standard 1 x 3/4" NPT pipe mount. (Contact MEDC if 1/2" NPT is required).						
Terminals:	8 x 2.5mm <sup>2</sup> .						
Labels:	Tag/Duty label option.						
Electrical ratings:							
	DC	AC					
Voltage	24	48	110	120	230	240	254
Current	0.89	0.30	0.38	0.38	0.22	0.22	0.18
Effective candlepower (Cd):	285 at 60 f.p.m.						
Peak candlepower:	580,000 (Peak candlepower is the maximum light intensity generated by a flashing light during its light pulse)						
UL 1971 On-axis output:	15 Cd.						
Multiplying factor for colored lenses:							
	Red	Blue	Amber	Green	Yellow		
	0.15	0.12	0.51	0.49	0.86		
Relay Initiate:	24V dc relay initiate only.						

## Ordering Requirements

The following code is designed to help in the selection of the correct unit. Build up the reference number by inserting the code for each component into the appropriate box.

Model	Certification	Voltage	Flashrate	Lens Color	Guard	Options	Unit Finish																																																																																		
<b>XB16</b>	<input type="text"/>	<input type="text"/>	<input type="text"/>	<input type="text"/>	<input type="text"/>	<input type="text"/>	<input type="text"/>																																																																																		
	<table border="1"> <tr><th>Certification</th><th>Code</th></tr> <tr><td>UL</td><td>UL</td></tr> <tr><td>UL (ordinary locations)</td><td>UW</td></tr> <tr><td>UL 1971</td><td>US</td></tr> </table>	Certification	Code	UL	UL	UL (ordinary locations)	UW	UL 1971	US	<table border="1"> <tr><th>Voltage</th><th>Code</th></tr> <tr><td>24V d.c.</td><td>024</td></tr> <tr><td>48V d.c.</td><td>048</td></tr> <tr><td>110V a.c.</td><td>110</td></tr> <tr><td>120V a.c.</td><td>120</td></tr> <tr><td>230V a.c.</td><td>230</td></tr> <tr><td>240V a.c.</td><td>240</td></tr> <tr><td>254V a.c.</td><td>254</td></tr> </table>	Voltage	Code	24V d.c.	024	48V d.c.	048	110V a.c.	110	120V a.c.	120	230V a.c.	230	240V a.c.	240	254V a.c.	254	<table border="1"> <tr><th>Flashrate</th><th>Code</th></tr> <tr><td>60 fpm</td><td>60</td></tr> <tr><td>80 fpm</td><td>80</td></tr> <tr><td>120 fpm</td><td>120</td></tr> </table>	Flashrate	Code	60 fpm	60	80 fpm	80	120 fpm	120	<table border="1"> <tr><th>Color</th><th>Code</th></tr> <tr><td>Red</td><td>R</td></tr> <tr><td>Blue</td><td>B</td></tr> <tr><td>Green</td><td>G</td></tr> <tr><td>Amber</td><td>A</td></tr> <tr><td>Yellow</td><td>Y</td></tr> <tr><td>Clear</td><td>C*</td></tr> <tr><td colspan="2">*UL 1971 version available with clear lens only</td></tr> </table>	Color	Code	Red	R	Blue	B	Green	G	Amber	A	Yellow	Y	Clear	C*	*UL 1971 version available with clear lens only		<table border="1"> <tr><th>Guard</th><th>Code</th></tr> <tr><td>Yes</td><td>Y</td></tr> <tr><td>None</td><td>N</td></tr> </table>	Guard	Code	Yes	Y	None	N	<table border="1"> <tr><th>Option</th><th>Code</th></tr> <tr><td>Tag label</td><td>T</td></tr> <tr><td>Duty label</td><td>D</td></tr> <tr><td>Relay initiate*</td><td>R</td></tr> <tr><td>None</td><td>N</td></tr> <tr><td colspan="2">*Suitable for 24V dc supplies only.</td></tr> </table>	Option	Code	Tag label	T	Duty label	D	Relay initiate*	R	None	N	*Suitable for 24V dc supplies only.		<table border="1"> <tr><th>Finish</th><th>Code</th></tr> <tr><td>Natural Black</td><td>N</td></tr> <tr><td>Red</td><td>R</td></tr> <tr><td>Blue</td><td>B</td></tr> <tr><td>Yellow</td><td>Y</td></tr> <tr><td>Green</td><td>G</td></tr> <tr><td>White</td><td>W</td></tr> <tr><td>Special Finish</td><td>S</td></tr> </table>	Finish	Code	Natural Black	N	Red	R	Blue	B	Yellow	Y	Green	G	White	W	Special Finish	S
Certification	Code																																																																																								
UL	UL																																																																																								
UL (ordinary locations)	UW																																																																																								
UL 1971	US																																																																																								
Voltage	Code																																																																																								
24V d.c.	024																																																																																								
48V d.c.	048																																																																																								
110V a.c.	110																																																																																								
120V a.c.	120																																																																																								
230V a.c.	230																																																																																								
240V a.c.	240																																																																																								
254V a.c.	254																																																																																								
Flashrate	Code																																																																																								
60 fpm	60																																																																																								
80 fpm	80																																																																																								
120 fpm	120																																																																																								
Color	Code																																																																																								
Red	R																																																																																								
Blue	B																																																																																								
Green	G																																																																																								
Amber	A																																																																																								
Yellow	Y																																																																																								
Clear	C*																																																																																								
*UL 1971 version available with clear lens only																																																																																									
Guard	Code																																																																																								
Yes	Y																																																																																								
None	N																																																																																								
Option	Code																																																																																								
Tag label	T																																																																																								
Duty label	D																																																																																								
Relay initiate*	R																																																																																								
None	N																																																																																								
*Suitable for 24V dc supplies only.																																																																																									
Finish	Code																																																																																								
Natural Black	N																																																																																								
Red	R																																																																																								
Blue	B																																																																																								
Yellow	Y																																																																																								
Green	G																																																																																								
White	W																																																																																								
Special Finish	S																																																																																								



All the above specifications, dimensions, weights and tolerances are nominal (typical) and MEDC reserve the right to vary all data without prior notice. No liability is accepted for any consequence of use.