

# G R I P K I T<sup>®</sup>



**Gripkit**<sup>®</sup> is a patented product designed to help prevent potential leaks in metal gasket face-seal fittings. The Gripkit is designed for use on critical semiconductor industry ultra pure and high-purity gas applications as well as vacuum delivery systems. The product is color coded for ease in system identification and is engineered to be used with most major manufacturers fitting components.

# GRIPKIT®

## HOW DOES IT WORKS

The Gripkit fixes the position of the male nut relative to the female nut, and therefore, the distance between the two sealing glands. Consequently, when torque is applied to either side of the fitting connection, it does not cause the nuts to rotate in opposition and lose their compression on the gasket. In extreme cases, when very high torque is applied to the fitting joint, the glands may rotate within the fixed nuts, but the connector will remain intact. Gripkit will prevent the kind of catastrophic leak that results from the loss of gland compression on the gasket.

## WHY USE GRIPKIT®?

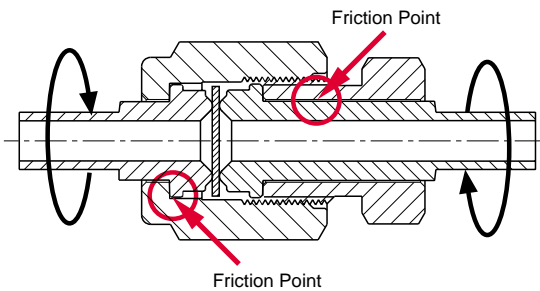
When pipe fitters, maintenance technicians and operators work on gas distribution systems, they can accidentally "torque" the system, causing fittings down-line to come apart.

Most veteran gas system engineers recognize this common phenomenon. Another problem that is widespread occurs when a fitting connection "shakes apart" because it is mounted on, or near vibrating equipment. Sources of system vibration include pumps, motors, pneumatic actuators as well as mobile equipment. Gripkit offers a very inexpensive solution to these real and potentially costly problems.

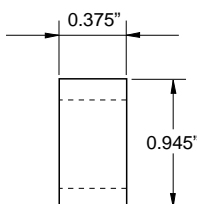
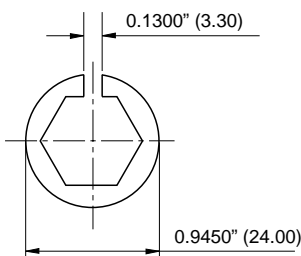
## MATERIAL

Gripkit® consists of three components:

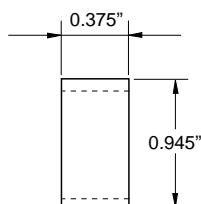
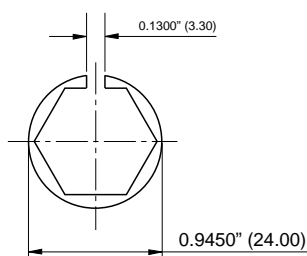
Part Number	Description	Material
GK-NY-M4	5/8" Hex male crescent adapter	Blue Nylon
GK-NY-F4	3/4" Hex female crescent adapter	Blue Nylon
GK-1-CL-WH	White color coded clamp	Acetyl
GK-1-CL-BL	Blue color coded clamp	Acetyl
GK-1-CL-YL	Yellow color coded clamp	Acetyl
GK-1-CL-RD	Red color coded clamp	Acetyl
GK-1-CL-GR	Green color coded clamp	Acetyl



1"x3/4"CRESCENT SECTION



1"x5/8"CRESCENT SECTION



1" CLAMP SECTION

